



# Summer Foundation – La Trobe University Research Program 2023/24

September 2024

---



SUMMER  
FOUNDATION



LA TROBE  
UNIVERSITY

# Contents

<b>Foreword</b>	<b>3</b>
<b>Purpose</b>	<b>4</b>
<b>Principles</b>	<b>4</b>
<b>Research methods</b>	<b>5</b>
Scoping literature reviews	5
Administrative data projects	6
Primary data projects	6
Current scoping literature reviews	7
Current administrative data projects	9
Current primary data projects	11
<b>Research outputs</b>	<b>16</b>
Journal articles	16
Reports	20
Opinion Pieces	21
Conferences and presentations	22
<b>Research Team</b>	<b>23</b>

# Foreword

The enduring research partnership between the Summer Foundation and La Trobe University's Living with Disability Research Centre is testament to what is possible when rigorous academic methods are applied to real-world problems. The research program at the Summer Foundation is unashamedly ambitious. It needs to be in order to address the manifold challenges experienced by people with disability in Australia today.

Our Research team now consists of 26 researchers, including experienced academics, clinical experts, research assistants, and doctoral candidates. They come from diverse backgrounds, including psychology, speech pathology, occupational therapy, and physiotherapy. Together, the team work on projects covering topics as broad as younger people in residential aged care (RAC), hospital discharge, the disability housing market, and factors contributing to quality disability support.

There are numerous challenges and opportunities for the disability sector with the release of the final reports for the NDIS Review and the Disability Royal Commission. These reviews represent years of work examining submissions from people with disability, their supporters, service providers and industry experts, and have collectively nominated over 200 recommendations. The government response to these recommendations will have a significant impact on the disability sector and our future research.

The breadth of the Summer Foundation's research program continues to grow, with over 30 different research or industry reporting projects continuing or starting in 2023/24. The [Summer Foundation Research Library](#) provides a comprehensive overview of our research projects and publications. We have over 20 new publications planned for 2024/25, and in 2023/24, our team delivered:

- 10 journal articles submitted for peer-review
- 5 published journal articles
- 10 reports, including 5 industry reports
- 7 academic conference presentations and posters

The coming year presents a time of challenges as the disability sector undergoes a lot of reflection, evaluation and changes. It is also a pivotal time for the Summer Foundation as we relaunch to focus on identifying, designing and scaling housing and living solutions for people with disability with 24/7 support needs. By challenging the status quo, we aim to set a new standard in housing and living supports, one that lifts expectations of what a good life and future can look like for Australians with disability with high support needs. Building the evidence base through timely and impactful research is a key part of bringing this vision to life.

None of this work is possible without our dedicated staff, and the support of La Trobe University, for which we are very grateful.

## **Di Winkler PhD AM**

CEO & Founder, Summer Foundation  
Adjunct Associate Professor,  
La Trobe University

## **Jacinta Douglas PhD**

*Summer Foundation Research Chair (Living Well with Brain Injury)*  
*Emeritus Professor in Acquired Brain Injury,*  
*La Trobe University*

# Purpose

The Summer Foundation–La Trobe University Research Program makes a difference to the lives of people with disability and complex needs by using research to:

## 1. Understand

- The preferences and needs of people with disability
- What has been tried and what works in Australia and globally
- Systems, drivers and barriers that limit the capacity of people with disability to live like everyone else

## 2. Design

- Frameworks to guide the rigorous evaluation of usual practice and interventions
- Potential solutions, new services and systems change by using rigorous evidence and co-design with people with disability and other agencies

## 3. Evaluate

- Effectiveness and impact of pilots, prototypes and changes in policy and practice

# Principles

Three key principles underpin the Summer Foundation’s approach to research:

1. Engagement of research end users where possible, particularly people aged 18 - 65 with disability or with complex support needs requiring access to 24/7 supports, as well as community organisations, mainstream services and policy makers.
2. Impact on policy, practice and systems change is central to the purpose and design of research.
3. That all research upholds knowledge exchange to ensure research efforts have impact. Collaboration and opportunities for engagement of stakeholders will be maximised throughout the research process.



# Research methods

A range of research methods is required to develop the breadth of evidence we need to inform policy and practice related to the preferences and needs of people with disability. Most of the current projects fall into 3 categories: Scoping literature reviews, administrative data projects and primary data projects. As our projects mature, we are in a position to design, trial and evaluate solutions that improve the lives of people with disability and complex needs. This requires intervention across the disability sector, hospitals, aged care organisations, government and the NDIS. Where possible, we aim to partner with people with lived experience and others with subject matter expertise at the outset of, and throughout the course of each study.

## Scoping literature reviews

- What is the problem?
- What solutions have been found?
- What gaps are there and what are the opportunities for future research?

## Administrative data projects

- What data exists on the problem?
- Does the data point to solutions?

## Primary data projects

- What evidence is missing to help solve the problem?
- What evidence is needed to change systems and practice?
- What do people with disability want and need?

## Scoping literature reviews

We systematically search, review and summarise the academic and grey literature to develop a deep understanding of the disability and related systems. The Research team completes scoping reviews to provide an evidence base to underpin our research. The rigorous method for each of these reviews is carefully documented to ensure systematic and timely review, publication in peer reviewed journals and ability to be updated every few years.

We don't believe in reinventing the wheel. These scoping reviews ensure that when we are designing potential research studies and solutions, we are building on previous local and international work. The content of these reviews is foundational for a range of publications, including journal articles, reports, policy papers, government submissions, opinion pieces and funding applications.

## Administrative data projects

Given that data collection in longitudinal studies is time consuming and expensive, the Research team utilises statistical analysis to unlock the full potential of existing administrative and population data. We partner with data custodians and data scientists to extract, clean and manipulate large data sets, combine data from different systems, develop deeper insights and reach data informed conclusions. Projects may involve predictive analytics, data visualisation, and data wrangling of large disability, health, housing or aged care data sets.

## Primary data projects

Scoping literature reviews and the analysis of administrative and population data alone will not provide a sufficient evidence base. The perspectives of people with disability are key to developing impactful solutions. Most of our primary data research projects are mixed methods, collecting both quantitative and qualitative data. Primary data projects allow us to develop specific research questions and gain rich insights from those most impacted by the issues at hand (i.e., people with disability) as well as those working within the systems involved (e.g., health professionals). Current primary data projects focus on hospitals and hospital discharge, outcomes for people moving into SDA, including use of a Home and Living Outcome Framework, development of a measure of quality disability support and an evaluation of the NDIS. We also have 3 PhD students exploring a range of topics including social integration, peer support and improving outcomes following discharge from rehabilitation.



## Current scoping literature reviews

**Desktop research report for NDIS Quality and Safeguards Commission project. “Resources to assist NDIS participants to understand their rights, make complaints and raise issues with a supported accommodation provider”**

**Aims:** This project is the first component of a larger project called *Co-designed resources to drive continuous improvement in Supported Accommodation* that is funded through a grant from the NDIS Commission and conducted in partnership with the Co-design team. The desktop scan will identify and review existing resources and data so that the co-designed resources developed build on what is currently available and avoid duplication.

**Progress:** Desktop scan report published online on the Summer Foundation website ([link](#)).

### **Housing and support needs and preferences of people with multiple sclerosis**

**Aims:** People with multiple sclerosis (MS) aged 18-65 are at risk of long hospitalisations and admission to RAC. Due to the progressive and often unpredictable nature of MS, housing and support needs and preferences for this population differ from those with non-progressive disability. The overarching aims of this study are to evaluate the ways that hospitals and the NDIS support people with MS to live a life that aligns with their needs and preferences, and to identify barriers, facilitators and opportunities for people with MS to receive optimal support to live independently in the community and avoid admission to RAC.

**Progress:** The initial search revealed many studies that met criteria. This project was split into 2 scoping reviews: Housing, and Support. The housing review is in the final stages of drafting, and work continues on the support focused manuscript.

### **Utilisation of co-design with adults with acquired neurological disability in the community.**

The aim of the scoping review is to synthesise available peer-reviewed literature which examines the use of co-design in service development and/or research with adults with acquired neurological disability and who live within the community.

**Progress:** Protocol manuscript has been published ([link](#)). Scoping review manuscript in preparation.

### **Understanding the interaction between support and social participation for people with physical disabilities: A scoping review protocol**

**Aims:** Despite the established importance of social participation for people with physical disability, and the existing evidence that many people with disability require support to participate in the community, it appears that very few studies have sought to thoroughly investigate the interaction between support and social participation for adults with physical disability. Additionally, a recent study recommended in-depth exploration of factors that influence social participation. Therefore, the aim of this scoping review is to explore the literature related to the interaction between support and social participation for adults with physical disability and high and complex support needs, and understand any existing gaps in the literature where further research may be required in order to maximise quality support and social participation.

**Progress:** Scoping Review Protocol has been published ([link](#)).

## **An updated review of international literature on the outcomes of individualised housing for people with disability and complex needs.**

**Aims:** In 2022, Oliver et al. published a scoping literature review on quantitatively assessed outcomes and qualitative findings for adults with disability and complex needs in individualised housing, covering the years 1999 to 2019. Since 2019, the adoption of individualised housing models has increased globally, and literature reviews are most effective when current.

Therefore, this updated review aims to identify outcomes for people with disability and complex needs in individualised housing, as reported in the peer-reviewed literature from 2019 to 2024. We hope that the insights from this article will inform policy, planning, and funding, and contribute to higher quality implementation of individualised housing models.

**Progress:** Database searches, article screening and data extraction are complete. Manuscript in preparation.

## **Effective housing and support models for people with Huntington's Disease**

**Aims:** It is important to understand the most effective housing and support models for people with Huntington's Disease (HD) and understand how NDIS funding can support people for the duration of their lives and avoid admission to RAC. This study aims to identify the most effective housing and support models for people with HD. A scoping review was undertaken to identify and integrate the peer-reviewed publications that provide data on the housing and support models for people with HD.

**Progress:** Manuscript in preparation.

## **Support coordination: Scoping review and qualitative study**

**Aims:** The NDIS represents a significant and intricate reform designed to deliver individualised, person-centred support. However, for people with disability and complex needs to truly exercise choice and control and achieve positive outcomes, they often require assistance in navigating the scheme. A well-trained and competent workforce of support coordinators and navigators is essential to facilitate this. To effectively build the capacity of this workforce, it is important to understand what attributes and skills define an effective support coordinator or navigator, what the key challenges and barriers and what resources and supports would enhance their effectiveness in delivery high-quality outcomes for NDIS participants.

**Progress:** Manuscript in preparation.

## Current administrative data projects

### **Evaluating the discharge planning process: Barriers, challenges and facilitators of timely and effective discharge**

**Aims:** Improving the pathway from hospital to the community is the key to reducing the number of younger Australians in RAC. However, leaving hospital and returning to the community after a traumatic accident or injury is a complex transition that requires effective coordination between the health system and the NDIS. This study involves retrospective and prospective data collection over 5 years at multiple hospital sites across Australia. Data is being collected on the discharge planning process of young people who have been identified as likely to be eligible for the NDIS while in hospital.

**Progress:** Initial findings were published as a report on the Summer Foundation Website ([link](#)). New data is currently being collected, with the aim of producing a peer-reviewed manuscript.

### **Housing and support needs and preferences of people with MS**

**Aims:** People with MS have unique housing and support needs that are essential to maintain independence at home; however, there is limited research to guide housing and supports for this population. This study aims to synthesise existing data from participants with MS from larger projects exploring the needs and preferences of people with disability in the domains of housing, hospital discharge outcomes, and paid support. A further aim of this study is to inform the planning of a co-designed intervention based on this study's findings.

**Progress:** The manuscript has been published ([link](#)).

### **Analysis of publicly available data from the Royal Commission into Violence, Abuse, Neglect, and Exploitation of People with Disability**

**Aims:** This project aims to understand the needs, preferences, and experiences of people with disability in Australia in relation to their housing and disability support. The research follows a qualitative research design involving publicly available documents from the Royal Commission into Violence, Abuse, Neglect and Exploitation of People with Disability (or 'Disability Royal Commission', DRC). The DRC investigated and reported on experiences of people with disability in a range of settings, including education, employment, housing, healthcare and others. The DRC had high levels of engagement with nearly 10,000 people sharing their experiences through public hearings, submissions, workshops and private sessions. This study draws on evidence provided to the DRC by people with disability or their family and close friends.

**Progress:** Manuscript in preparation.

### **Outcome Health: Primary health needs and service utilisation of people with disability**

**Aims:** People with a disability under 65 years tend to experience substantially more health problems than the general population. General practitioners (GPs) play an important role in health management of people with disability and early intervention for the prevention of comorbidities and health complications. The project is a collaboration between Outcome Health and the Summer Foundation to analyse linked data from the NDIS and Eastern Melbourne Primary Health Network for people with disability in order to contribute to the knowledge base of primary health needs of people with disability.

**Progress:** The research protocol has been published ([link](#)). The first manuscript has been submitted and is under review.

### **Hospital to Home (formerly Housing Brokerage Service)**

**Aims:** People with severe disabilities and complex needs often experience delayed hospital discharge due to housing issues. Delayed discharge is associated with adverse inpatient outcomes, avoidable readmissions, and increased healthcare costs. When housing is a barrier to discharge, there is also a risk of inappropriate discharge, such as adults under 65 being discharged to RAC. The Summer Foundation Hospital to Home service aims to facilitate timely and effective hospital discharge by helping people with complex needs and their supports identify and search for suitable housing solutions. The aim of the project is to assess the impact of the Hospital to Home service through the analysis of a comprehensive dataset set up as part of service delivery.

**Progress:** Data has been collected and is being analysed. The first manuscript is being drafted.

## Current primary data projects

### **Moving into new housing designed for people with disability: Evaluation of tenant outcomes**

**Aims:** This national, longitudinal project is funded by an Australian Research Council Linkage Grant, and is investigating the experiences, outcomes and economic impact of people with disability moving into NDIS funded specialist disability accommodation (SDA). Up to 36,000 people will be eligible for SDA payments in the next 20 years. Despite this demand, little is known about the impact that SDA has on the lives of tenants. Without knowing what works and what doesn't, there's a risk that Australia will develop SDA that aren't fit for purpose. By using the Home and Living Outcome Framework, this study collects evidence that will ultimately benefit people with disability by fostering innovative practice in housing and support. The Framework fills an urgent need by using valid, reliable, and tested outcome measures to understand life domains including overall health, mental wellbeing, community integration, and support needs.

**Progress:** Two pilot studies published ([1<sup>st</sup> pilot study](#), [2<sup>nd</sup> pilot study](#)); 4 conference papers presented; 1 manuscript submitted; 4 manuscripts in preparation; data collection ongoing.

### **Qualitative Investigation of Hospital Discharge for People with Disability and Complex Needs**

**Aims:** This project aims to identify the lived experience of hospital discharge from the perspective of people with disability, close others and discharge planners working in hospitals. Close others and discharge planners participate in a single interview, and people with disability are interviewed at three timepoints over the first year post-discharge.

**Progress:** A manuscript for time point 1 for people with disability (1 month post-discharge) has been submitted for publication. A manuscript based on discharge planner interviews is in draft. Data collection is continuing for close others.

### **Evidence base on barriers and enablers to leaving RAC**

**Aims:** This study seeks to understand what is contributing to the slow rate of transition out of aged care from the perspective of young people living in residential aged care. It explores the housing needs and preferences of young people in residential aged care (YPIRAC), and the barriers experienced in achieving housing choice and control in the NDIS context for NDIS participants with a goal to move.

**Progress:** Manuscript has been submitted.

### **Getting young people out of RAC: A qualitative study on supporting young people living in RAC to achieve their housing goals**

**Aims:** This study seeks to understand what is contributing to the slow rate of transition out of aged care from the perspective of supporters of people living in RAC (support coordinators, family, allied health professionals, RAC engagement coordinators).

**Progress:** Data collection continues.

### **Feedback in Support Accommodation co-design project: A research evaluation**

**Aims:** The aim of this project is to evaluate the tools produced, and co-design process involved, in the NDIS Quality & Safeguards Commission funded project: Co-designed resources to drive continuous improvement in Supported Accommodation. The co-design project involves NDIS participants living in supported accommodation, supporters and providers in the co-design and co-creation of a series of resources to build the capacity of NDIS participants to exercise choice, control and agency about their home and living environment. The research evaluation includes: 1) Evaluation of the experience of participating in the co-design and co-creation of the resources, and 2) Evaluation of the usability, feasibility, effectiveness and reach of the produced tools.

**Progress:** Part 1) Evaluation of the experience of participating in the co-design and co-creation of resources: Ethics approval granted. Data collection and analysis has commenced. Part 2) Evaluation of the usability, feasibility, effectiveness and reach of the produced tools: Ethics submission in progress.

### **Co-design engagement of adults with lived experience of disability**

**Aims:** Co-design approaches to research present an opportunity to enable the voice of people with disability to be heard, while increasing the impact of research outcomes. However, there is limited evidence guiding the use of co-design approaches with people with complex disability. This study aims to develop an in-depth understanding of the experience of co-design engagement, exploring enablers and barriers to engaging people with complex acquired disabilities. We also seek to identify potential benefits of co-design engagement including peer connection and capacity building.

**Progress:** Manuscript in preparation.

### **What could inpatient rehabilitation teams do to better prepare people with ABI and their families for discharge and improve community inclusion post hospital discharge?**

**Aims:** This PhD aims to develop a holistic understanding of how the rehabilitation environment can better prepare people for life in the community following severe acquired brain injury (ABI). The subsequent aims of this work are to: 1: Gather information from the existing literature regarding the lived experiences of people with ABI as they resume activities within their community, during the transition from hospital to home. 2: Collect contemporary primary data regarding the lived experiences of people with ABI and their close others, as they resume activities within their community, during inpatient rehabilitation and the transition from hospital to home. 3: Explore the perspectives of healthcare providers (inpatient and community clinicians) regarding the barriers, facilitators and practice strategies that support community participation outcomes for people following ABI. 4: Utilise all the qualitative data collected to conceptualise the journey from hospital to moving on with life, determining the factors that help or hinder transition to community participation.

**Progress:** 1: Manuscript has been submitted and is currently under peer review. 2: A manuscript is in preparation. 3: Information for scoping review is being collected. 4: Ethics approved to commence data collection.

### **Innovation in Disability Housing co-design project: A research thematic analysis**

**Aims:** This project sought to better understand the housing experience and needs of SDA tenants participating in a co-design project. The aim of the co-design project is to inform the design of a modular, prefabricated, relocatable model of Specialist Disability Accommodation (SDA) for regional settings. The research involved thematic analysis of the key learnings from the co-design workshops, as well as documenting the co-design process.

**Progress:** Data analysis completed. Report in preparation.

### **Supporting the design and construction sector to transition to minimum accessible standards in new homes: A qualitative study**

**Aims:** By 2060, it is estimated that over 5 million Australians will have a mobility impairment. However, Australia has an insufficient supply of accessible housing. In response, in early 2021 Australia's building ministers agreed to amend the National Construction Code (NCC) to include mandatory minimum accessibility standards, which would apply to most new houses and apartments. However, not all states and territories have agreed to these standards. Rigorous evidence is needed to support the implementation, transition, and national adoption of accessible design standards. This study explored the perspectives of practising design and construction professionals engaged in designing and delivering housing in Australia.

**Progress:** Report was published on the Summer Foundation website ([link](#)).

### **What does an improved NDIS look like? Learning from the NDIS participant experience**

**Aims:** The aim of this study is to understand the experience of the NDIS for participants. It seeks to understand their insights and potential recommendations for policy and practice about the elements of quality and cost-effective support.

**Progress:** Manuscript is submitted and currently under review.

### **Evaluation of participant-led videos**

**Aims:** Many NDIS participants living with chronic disability do not have the cognitive or communication capacity "in the moment" to direct support services. For people with cognitive and communication impairments, training and leading their support workers is likely to be considerably more difficult than for people with other types of disability. In response to this issue, we developed a mechanism by which people with cognitive and communication impairments can direct support workers and lead their supports – Participant Led Videos (PLVs). The pilot and subsequent evaluation of PLVs were endorsed by the people with disability who made the videos, and their close others.

**Progress:** First manuscript published ([link](#)) and second manuscript is under peer review.

## **Understanding the skills and characteristics of a good support coordinator who assists people with disability and complex needs**

**Aims:** In order for people with disability and complex needs to have choice and control and achieve positive outcomes under the NDIS they need to be empowered to navigate the scheme. A high-quality workforce of support coordinators is critical to enable this. In addition to the abovementioned scoping review, this qualitative study investigates the skills and characteristics that make a good support coordinator as well as the barriers they face, by interviewing people with disability, family members and support coordinators.

**Progress:** Data collection has been completed, and the manuscript is in preparation.

## **A grounded theory study of the quality of paid disability support for adults with acquired neurological disability**

**Aims:** Paid disability support is often key to living an ordinary life and exercising fundamental human rights for many adults with an acquired neurological disability. This study will develop a comprehensive understanding of the factors that influence the quality of paid disability support grounded in the lived experience of people with acquired neurological disability, close others and disability support workers.

**Progress:** Final manuscript has been published ([link](#)).

## **Building an evidence base to inform the development of peer support programs for people with acquired neurological disability**

**Aims:** Acquiring a neurological disability is often a sudden and traumatic event that can disrupt a person's life and lead to a complex web of biopsychosocial symptoms. Peer support has been gaining increasing global interest for helping individuals navigate the disruption and symptoms of acquired neurological disabilities. However, a significant barrier to the progression of the field is a lack of clarity on how to design, implement and evaluate peer support for this cohort. This project will consist of a series of studies aiming to build an evidence base to inform the development of peer support programs for people with acquired neurological disability. The first study within this project will summarise existing literature on the peer support needs, preferences and experiences of adults with acquired neurological disability.

**Progress:** Scoping Review Protocol manuscript has been submitted and is under review.

## **Evaluation of the Enliven community initiative**

**Aims:** Traditional models of shared support arrangements (e.g. SDA, group homes), once in place and fully funded, leave little ability for residents to choose and influence how supports are delivered. Within these models we rarely see the separation of tenancy and support services, and this conflict of interest disempowers residents. Enliven Housing is a for-profit SDA provider that designed Enliven Community, a shared support facilitation model, to operate alongside the apartments they build and lease. Key to the Enliven Community model is an independent facilitator that coordinates and communicates residents' directions to the housing and support providers they have engaged. This research project will evaluate the effectiveness of the Enliven Community facilitation model in achieving good outcomes for residents.

**Progress:** Data collection and analysis continues. Report is in preparation.

### **Co-design of the Livery Housing Tenant Advisory Group: A research evaluation**

**Aims:** A research evaluation was conducted to document the value and process of co-designing an authentic and effective tenant advisory group. Six participants from the co-design project (4 tenants; 2 staff) consented to participate in the research evaluation. Interviews were conducted with each of the participants at the conclusion of the co-design project. Analysis of the interview data provides insights into the participant experience and highlights suggestions for improvement.

**Progress:** Project completed. A research report and summary document were produced and shared with Livery Housing, along with 4 video illustrations (developed by the co-design team) to capture the participant experience of the project.

# Research outputs

## Journal articles

### July 2023–July 2024

1. Evans, R., Douglas, J., Winkler, D., & Cubis, L. (2024). Understanding the interaction between support and social participation for people with physical disabilities: a scoping review protocol. *BMJ Open*. <https://doi.org/10.1136/bmjopen-2023-083102>
2. Topping, M., Douglas, J., & Winkler, D. (2024). Building an evidence-based multi-level system of quality disability support for adults with acquired neurological disability. *Disability and Rehabilitation*. <https://doi.org/10.1080/09638288.2024.2316780>
3. Douglas, J., Winkler, D., D’Cruz, K., Oliver, S., Liddicoat, S., Naismith, J., and Wakim, D. (2024) Being a pioneer: a qualitative study of moving into individualised housing from the perspective of adults with neurological disability. *Brain Impairment*. <https://www.publish.csiro.au/ib/pdf/IB23079>
4. Cubis, L., Roseingrave, E., Gosden-Kaye, E.Z., Winkler, D. and Douglas, J. (2024) 'Well, what are you going to do when you're out there?': A scoping review of successful hospital discharge for people with acquired disability and complex needs aged 18–65 years. *Brain Impairment*. <https://www.publish.csiro.au/IB/pdf/IB23088>
5. Cubis, L., McDonald, S., Dean, P., Ramme, R., D’Cruz, K., Topping, M., Fisher, F., Winkler, D., & Douglas, J. (2024). Using the Knowledge to Action framework to improve housing and support for people with Multiple Sclerosis. *Brain Impairment*. <https://doi.org/10.1071/IB23102>

### Pre-July 2023

1. Douglas, J., Winkler, D., McLeod, A., Oliver, S., Gardner, K., Supple, J., & Pearce, C. (2023). Primary healthcare needs and service utilisation of people with disability: A data linkage protocol. *BMJ Open*. <https://bmjopen.bmj.com/content/13/4/e068059>
2. Cvejic, R., Watkins, T., Walker, A., Reppermund, S., Srasuebku, P., Draper, B., Withall, A., Winkler, D., Honan, I., Mackechnie, D., Trollor, J. (2022). Factors associated with discharge from hospital to residential aged care for younger people with neuropsychiatric disorders: An exploratory case-control study using linked data in New South Wales, Australia. *BMJ Open*. <https://bmjopen.bmj.com/content/12/12/e065982>
3. Topping, M., Douglas, J., & Winkler, D. (2022). “You’re supporting the whole person”: A grounded theory study of quality support according to close others of people with neurological disability, *Neuropsychological Rehabilitation*. <https://doi.org/10.1080/09602011.2022.2153149>
4. D’Cruz, K., Antonopoulos, S., Rothman, R., Douglas, J., Winkler, D., & Oliver, S. (2022). Co-designing with adults with acquired neurological disability in the community: A scoping review protocol. *BMJ Open*. <https://bmjopen.bmj.com/content/bmjopen/12/12/e064921.full.pdf>
5. Topping, M., Douglas, J., Winkler, D. (2022). “Let the people you’re supporting be how you learn”: A grounded theory study on quality support from the perspective of disability support workers. *Disability and Rehabilitation*. <https://www.tandfonline.com/doi/full/10.1080/09638288.2022.2148300>

6. Oliver, S., Douglas, J., Winkler, D., Pearce, C., Minter, E., Jarman, H. K., and Topping, M. (2022). The healthcare needs and general practice utilization of people with acquired neurological disability and complex needs: A scoping review. *Health Expectations*. <https://onlinelibrary.wiley.com/doi/epdf/10.1111/hex.13640>
7. Banaszak-Holl, J., Morello, R., Sze-Ee, S., Cameron, P., Brown, M., Mitsch, V., Moubarak, R., and Winkler, D. (2022). Do young people with neurological conditions in residential aged care use hospitals differently than those in the community? Evidence from Victorian hospital data, 2014–2017. *Health and Social Care in the Community*. <https://onlinelibrary.wiley.com/doi/epdf/10.1111/hsc.14022>
8. Douglas, J., D’Cruz, K., Winkler, D., Topping, M., Bucolo, C., and Finis, C. (2022). Development and preliminary evaluation of a novel participant-led video intervention to train disability support workers. *Health and Social Care in the Community*. <https://onlinelibrary.wiley.com/doi/10.1111/hsc.13961>
9. Currie, S., Douglas, J., and Winkler, D. (2022). ‘What’s next?’ The journey from hospital to community engagement from the perspectives of adults following severe acquired brain injury: A scoping review protocol. *BMJ Open*. <https://bmjopen.bmj.com/content/12/9/e064226.full>
10. Topping, M., Douglas, J., & Winkler, D. (2022). “They treat you like a person, they ask you what you want”: A grounded theory study of quality paid disability support for adults with acquired neurological disability. *Disability and Rehabilitation*. <https://www.tandfonline.com/doi/pdf/10.1080/09638288.2022.2086636>
11. Goodwin, I., Davis, E., Winkler, D., Douglas, J., Wellecke, C., D’Cruz, K., Mulherin, P., & Liddicoat, S. (2022). Making homes more accessible for people with mobility impairment: A lived experience perspective. *Australian Journal of Social Issues*. <https://onlinelibrary.wiley.com/doi/full/10.1002/ajs4.214>
12. Douglas, J., Winkler, D., Oliver, S., Liddicoat, S., & D’Cruz, K. (2022). Moving into new housing designed for people with disability: Preliminary evaluation of outcomes. *Disability and Rehabilitation*. <https://www.tandfonline.com/doi/full/10.1080/09638288.2022.2060343>
13. Topping, M., Douglas, J., & Winkler, D. (2022). Adapting to remote interviewing methods to investigate the factors that influence the quality of paid disability support. *SAGE Research Methods: Doing Research Online*. <https://methods.sagepub.com/case/adapting-remote-interviewing-factors-quality-paid-disability-support>
14. Wellecke, C., D’Cruz, K., Winkler, D., Douglas, J., Goodwin, I., Davis, E., & Mulherin, P. (2022). Accessible design features and home modifications to improve housing accessibility: A mixed-methods survey of occupational therapists. *Disability and Health Journal*. <https://www.sciencedirect.com/science/article/pii/S1936657422000140>
15. Brown, M., Condi, A., Davis, E., Goodwin, I., Winkler, D., Douglas, J. (2021). Young people in residential aged care: Is Australia on track to meet its targets? *Australian Journal of Social Issues*. <https://doi.org/10.1002/ajs4.184>
16. D’Cruz, K., Douglas, J., & Serry, T. (2021). Humanising brain injury rehabilitation: A qualitative study examining humanising approaches to engagement in the context of a storytelling advocacy programme. *Brain Impairment*. <https://doi.org/10.1017/BrImp.2021.16>
17. D’Cruz K., Douglas J., & Serry T. (2021). Researching narrative storytelling with adults with acquired brain injury. In: Liamputtong P. (eds) *Handbook of Social Inclusion*. Springer, Cham. [https://link.springer.com/referenceworkentry/10.1007/978-3-030-48277-0\\_59-1](https://link.springer.com/referenceworkentry/10.1007/978-3-030-48277-0_59-1)

18. Topping, M., Douglas, J., & Winkler, D. (2021). General considerations for conducting online qualitative research and practice implications for interviewing people with acquired brain injury. *International Journal of Qualitative Methods*.  
<https://doi.org/10.1177/16094069211019615>
19. Brown, M., Bishop, G., Winkler, D., & Douglas, J. (2020). Young people in Australian residential aged care: Evaluating trends 2008 to 2018. *Australian Health Review*.  
<https://doi.org/10.1071/AH19172>
20. D'Cruz, K., Douglas, K., & Serry, T. (2020). Narrative storytelling as both an advocacy tool and a therapeutic process: Perspectives of adult storytellers with acquired brain injury. *Neuropsychological Rehabilitation*.  
<https://doi.org/10.1080/09602011.2019.1586733>
21. D'Cruz, K., Douglas, J., & Serry, T. (2020). Sharing stories of lived experience: A qualitative analysis of the intersection of experiences between storytellers with acquired brain injury and storytelling facilitators. *British Journal of Occupational Therapy*.  
<https://doi.org/10.1177/0308022619898085>
22. Jamwal, R., Jarman, H., Roseingrave, E., Douglas, J., & Winkler, D. (2020). Smart home and communication technology for people with disability: A scoping review. *Disability and Rehabilitation: Assistive Technology*.  
<https://doi.org/10.1080/17483107.2020.1818138>
23. Oliver, S., Gosden-Kaye, E., Winkler, D., & Douglas, J. (2020). The outcomes of individualized housing for people with disability and complex needs: A scoping review. *Disability and Rehabilitation*. <https://doi.org/10.1080/09638288.2020.1785023>
24. Oliver, S., Gosden-Kaye, E., Jarman, H., Winkler, D., & Douglas, J. (2020). A scoping review to explore the experiences and outcomes of younger people with disabilities in residential aged care facilities. *Brain Injury*.  
<https://doi.org/10.1080/02699052.2020.1805124>
25. Topping, M., Douglas, J., & Winkler, D. (2020). Factors that influence the quality of paid support for adults with acquired neurological disability: A scoping review and thematic analysis. *Disability and Rehabilitation*.  
<https://doi.org/10.1080/09638288.2020.1830190>
26. Jamwal, R., Enticott, J., Farnworth, L., Winkler, D., & Callaway, L. (2020). The use of electronic assistive technology for social networking by people with disability living in shared supported accommodation. *Disability and Rehabilitation: Assistive Technology*.  
<https://doi.org/10.1080/17483107.2018.1534998>
27. Jamwal, R., Callaway, L., Farnworth, L., & Winkler, D. (2018). Electronic assistive technology use in Australian shared supported accommodation: Rates and user characteristics. *Disability and Rehabilitation: Assistive Technology*.  
<https://doi.org/10.1080/17483107.2017.1360948>
28. Jamwal R., Callaway L., Winkler D., Farnworth L., & Tate R. (2018). Evaluating the use of smart home technology by people with brain impairment: Protocol for a single-case experimental design. *JMIR Research Protocols*.  
<https://www.researchprotocols.org/2018/11/e10451/>
29. Wiesel, I., Bullen, J., Fisher, K., Winkler, D., & Reynolds, A. (2017). Shared home ownership by people with disability. *AHURI Final Report*, Australian Housing and Urban Research Institute Limited. <https://www.ahuri.edu.au/research/final-reports/277>

30. Jamwal, R., Callaway, L., Ackerl, J., Farnworth, L., & Winkler, D. (2017). Electronic assistive technology used by people with acquired brain injury in shared supported accommodation: Implications for occupational therapy. *British Journal of Occupational Therapy*. <https://doi.org/10.1177/0308022616678634>
31. Callaway, L., Winkler, D., Tippett, A., Herd, N., Migliorini, C., & Willer, B. (2016) The Community Integration Questionnaire - Revised: Australian normative data and measurement of electronic social networking. *Australian Occupational Therapy Journal*. <https://doi.org/10.1111/1440-1630.12284>
32. Winkler, D., Callaway, L., Sloan, S., & Holgate, N. (2015). Everyday choice making: Outcomes of young people with acquired brain injury after moving from residential aged care to community-based supported accommodation. *Brain Impairment*. <https://doi.org/10.1017/Brlmp.2015.32>
33. Sloan, S., Callaway, L., Winkler, D., McKinley, K., & Ziino, C. (2012). Accommodation outcomes and transitions following community-based intervention for individuals with acquired brain injury. *Brain Impairment*. <https://doi.org/10.1017/Brlmp.2012.5>
34. Winkler, D., Farnworth, L., Sloan, S., & Brown, T. (2011). Moving from aged care facilities to community-based accommodation: Outcomes and environmental factors. *Brain Injury*. <https://doi.org/10.3109/02699052.2010.541403>
35. Winkler, D., Farnworth, L., Sloan, S., & Brown, T. (2011). Young people in aged care: Progress of the current national program. *Australian Health Review*. <https://doi.org/10.1071/AH10889>
36. Winkler, D., Farnworth, L., Sloan, S., Brown, T., & Callaway, L. (2010). Comparison of people with ABI living in two accommodation settings: Shared supported accommodation and residential aged care. *Brain Impairment*. <https://doi.org/10.1375/brim.11.3.313>
37. Winkler, D., Sloan, S., & Callaway, L. (2010). People under 50 with acquired brain injury living in residential aged care. *Brain Impairment*. <https://doi.org/10.1375/brim.11.3.299>
38. Sloan, S., Callaway, L., Winkler, D., McKinley, K., Ziino, C., & Anson, K. (2009). Changes in Care and Support Needs Following Community-based Intervention for Individuals With Acquired Brain Injury. *Brain Impairment*. <https://doi.org/10.1375/brim.10.3.295>
39. Sloan, S., Callaway, L., Winkler, D., McKinley, K., Ziino, C., & Anson, K. (2009). The Community Approach to Participation: Outcomes Following Acquired Brain Injury Intervention. *Brain Impairment*. <https://doi.org/10.1375/brim.10.3.282>

## Reports

### July 2023–June 2024

1. Winkler, D., Liddicoat, S., D’Cruz, K., Wellecke, C., Mulherin, P., & Douglas, J. (2024). *Supporting the design and construction sector to transition to minimum accessible standards in new homes: A qualitative study*. Summer Foundation.  
<https://apo.org.au/node/326951>
2. Dearn, E., D’Cruz, K., Winkler, D., Douglas, J. (2024). *Resources to assist NDIS participants to understand their rights, make complaints and raise issues with a supported accommodation provider – Desktop scan report*. Melbourne, Australia: Summer Foundation.  
<https://assets.summerfoundation.org.au/app/uploads/2024/03/18164240/SF-Desktop-scan-report-Feb2024.pdf>
3. Aimers, N., Morgan, A. J., Wellecke, C., Tuohy, L., Mulherin, P., Rothman, R., Rathbone, A., & Winkler, D. (2023). *Specialist Disability Accommodation Supply in Australia*. Melbourne, Australia: Housing Hub and Summer Foundation.  
[https://assets.ctfassets.net/blhxs4s3wp2f/oWDSNeGZKjAgGOYcReIsh/4d6bfc1f0d1bc73dc5f6647c32d6f88e/SDA\\_Supply\\_Report\\_2023.pdf](https://assets.ctfassets.net/blhxs4s3wp2f/oWDSNeGZKjAgGOYcReIsh/4d6bfc1f0d1bc73dc5f6647c32d6f88e/SDA_Supply_Report_2023.pdf)
4. Skipsey, M., Mulherin, P., Efstathiou, M., Rathbone, A., & Winkler, D. (2023). *Data Update: NDIA Decision-Making Timeframes on Specialist Disability Accommodation*. Housing Hub.  
[https://assets.ctfassets.net/blhxs4s3wp2f/d5cxyHB9dOm48Rhc8HUfs/ce039f2a8a82ff5161e2524f191a6af2/Data\\_update\\_\\_Housing\\_Delayed\\_and\\_Denied\\_September\\_2023.pdf](https://assets.ctfassets.net/blhxs4s3wp2f/d5cxyHB9dOm48Rhc8HUfs/ce039f2a8a82ff5161e2524f191a6af2/Data_update__Housing_Delayed_and_Denied_September_2023.pdf)
5. Tuohy, L., Wellecke, C., Aimers, N., Winkler, D., Rathbone, A., Robertson, J., & Rothman, R. (2023). *Specialist Disability Accommodation provider experience survey: August 2023*. Housing Hub and Summer Foundation.  
[https://assets.ctfassets.net/blhxs4s3wp2f/2QlpZVRx3K5bhA1O76pNCP/4da27ff309cfc2095da05ebcbe17abf/2023\\_08\\_SDA-Provider-Experience-Survey\\_08\\_18.docx\\_\\_1\\_.pdf](https://assets.ctfassets.net/blhxs4s3wp2f/2QlpZVRx3K5bhA1O76pNCP/4da27ff309cfc2095da05ebcbe17abf/2023_08_SDA-Provider-Experience-Survey_08_18.docx__1_.pdf)

## Opinion Pieces

July 2023–June 2024

1. Taleporos, G., **Winkler, D.** (2024, August 14) Lists of ‘eligible supports’ could be a backwards step for the NDIS and people with disability, From <https://theconversation.com/lists-of-eligible-supports-could-be-a-backwards-step-for-the-ndis-and-people-with-disability-236578>
2. **Winkler, D.** (2024, June 12) The government is not on track to get every younger person out of aged care by next year. What now?, From <https://theconversation.com/the-government-is-not-on-track-to-get-every-younger-person-out-of-aged-care-by-next-year-what-now-223007>
3. **Winkler, D.**, Douglas, J. (2024, April 17) Choice and control: will NDIS reforms mean people with disability don’t get to decide who they live with?, From <https://theconversation.com/choice-and-control-will-ndis-reforms-mean-people-with-disability-dont-get-to-decide-who-they-live-with-227580>
4. **Winkler, D.** (2023, December 8) Taken together, the NDIS review and the royal commission recommendations could transform disability housing, From <https://theconversation.com/taken-together-the-ndis-review-and-the-royal-commission-recommendations-could-transform-disability-housing-216267>
5. **Winkler, D.** (2023, September 29) The disability royal commission recommendations could fix some of the worst living conditions – but that’s just the start, From <https://theconversation.com/the-disability-royal-commission-recommendations-could-fix-some-of-the-worst-living-conditions-but-thats-just-the-start-213466>

## Conferences and presentations

### July 2023–June 2024

1. Topping, M., Douglas, J., and Winkler, D., Developing a framework to co-produce tools to improve the quality of support based on the lived experience of people with acquired neurological disabilities, support workers, and close others. 21st NR-SIG-WFNR Conference. Lison, Portugal
2. Douglas, J., Cognitive-communication in older adults: Exploring the Impact of normal ageing and traumatic brain injury (TBI). 21st NR-SIG-WFNR Conference. Lisbon, Portugal
3. Rothman, R., Oliver, S., Douglas, J., and Winkler, D., The change in mental well-being over one year for people with neurological disabilities and complex needs after moving into individualised housing. 47th ASSBI Brain Impairment Conference. Sydney, Australia.
4. Oliver, S., Jamwal, R., D’Cruz, K., Douglas, J., and Winkler, D., How do people with disability and complex needs experience the built environment in new specialist disability housing? 47th ASSBI Brain Impairment Conference. Sydney, Australia.
5. Minter, E-R., Cubis, L., Winkler, D., Douglas, J., and Carissa M., ‘An Evolution of the Way’: Planning Effective Hospital Discharge for People with Neurological Disability and Complex Needs 47th ASSBI Brain Impairment Conference. Sydney, Australia.
6. Cubis, L., McDonald, S., Dean, P., Ramme, R., D’Cruz, K., Fisher, F., Winkler, D., and Douglas, J., Applying the Knowledge to Action framework to improve housing and supports for people with Multiple Sclerosis 47th ASSBI Brain Impairment Conference. Sydney, Australia.
7. D’Cruz, K., Cubis, L., Finis, C., de Costa, M., Winkler, D., and Douglas, J., Co-designing with people with neurological disability: Obstacles and opportunities for authentic, collaborative practice. 47th ASSBI Brain Impairment Conference. Sydney, Australia.

# Research Team



**Dr Di Winkler AM**

*CEO and Founder of the Summer Foundation*  
Adjunct Associate Professor, Living with Disability Research Centre, La Trobe University  
HonLLD Monash, PhD, GAICD, GradDip Neuroscience, GradDip AppSc (Comp Sci), MAppSc, BAppSc (Occ Ther)



**Emeritus Professor Jacinta Douglas**

*Summer Foundation Research Chair (Living Well with Brain Injury)*  
Professor of Acquired Brain Injury, Living with Disability Research Centre, La Trobe University  
PhD (Psych), MSc (Psych), BAppSc (Sp Path)



**Dr Lee Cubis**

*Senior Research Fellow (Team Manager)*  
Adjunct Research Fellow, Living with Disability Research Centre, La Trobe University  
PhD (Clinical Psych), BPsychSc (Hons)



**Dr Kate D'Cruz**

*Senior Research Fellow (Team Manager)*  
Adjunct Research Fellow, Living with Disability Research Centre, La Trobe University  
PhD (Occ Ther), MOcc Ther, BOcc Ther



**Dr Mark Brown**

*Senior Research Fellow*  
Adjunct Research Fellow, Living with Disability Research Centre, La Trobe University  
PhD (Psych), GradDip Psych Studies, BAppSc (Psych) (Hons), B Contemporary Arts



**Dr Sharyn McDonald**

*Senior Research Fellow*  
PhD, MBus (research), PGCertEd, BAppSc.



**Dr Elroy (Liz) Dearn**

*Research Fellow*

PhD, MA (Soc Sc), BA (Sociology) (Psychology)



**Dr Rebecca Jamwal**

*Research Fellow*

Adjunct Research Fellow, Living with Disability Research Centre,  
La Trobe University

Research Lead (Occupational Therapy), Austin Health

PhD (Occ Ther), BOccTher (Hons)

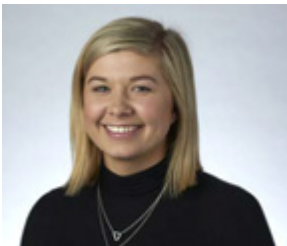


**Dr Stacey Oliver**

*Research Fellow*

Adjunct Research Fellow, Living with Disability Research Centre,  
La Trobe University

PhD (Psych), BA (Psych) (Hons)



**Dr Megan Topping**

*Postdoctoral Researcher*

PhD, BSc (Psych) (Hons)



**Dr Nicole Aimers**

*Research Project Manager*

PhD, BA (Hons), BSc (Psych and Psychophysiology)



**Ella-Rose Minter**

*Research Project Manager*

Grad Dip Leadership (Health & Human Services), BHealthSci (Sp  
Path)



**Dr Peter Mulherin**

*Research Project Manager*

PhD (Pol Sci), GradCert (Data Analytics), MA, BA



**Robin Ramme**  
*Research Project Manager*  
BPsych (Hons), PhD Candidate



**Suzanne Currie**  
*Doctoral Researcher*  
BSc (Physio) (Hons), MClIn Rehab, PhD Candidate



**Rebecca Evans**  
*Doctoral Researcher*  
BA (Psych) (Hons)



**Cornelia Wellecke**  
*Doctoral Researcher*  
BA (Psych) (Hons)



**Jessica Arnold**  
*Research Assistant*  
BL(Hons)/BPsych(Hons)



**Nancee Biviano**  
*Research Assistant*  
BA, BSoWk



**Fiona Carey**  
*Research Assistant*  
BSockWk (Hons)/BSci (Psych)



**Katherine Ganzon**  
*Research Assistant*  
BNg, GradCert (AdvpNg)



**Andrew Morgan**  
*Research Assistant*  
BPsychSc (Hons), MPsychOrg, PhD (SocCogPsych)



**Jacqui Naismith**  
*Research Assistant*  
BOccTher



**Rebecca Rothman**  
*Research Assistant*  
GradDip (Psych), BCrim/BPsych



**Laura Tuohy**  
*Research Assistant*  
BNg/BIntSt, BPsych (Hons)



**Libby Witts**  
*Research Assistant*  
BSoc&CommWelf, DipSoc&CommWelf



**Dr Gary Annat**  
*Research Centre Administrator*  
PhD (Chem), BSci (Hons)