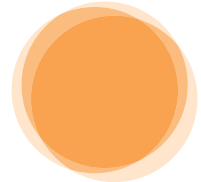




**BUILDING BETTER LIVES
FOR YOUNG PEOPLE IN
NURSING HOMES**

SUMMER
FOUNDATION



SUMMER FOUNDATION STRATEGIC PLAN 2021-2025

SEPTEMBER 2021



WHY WE EXIST

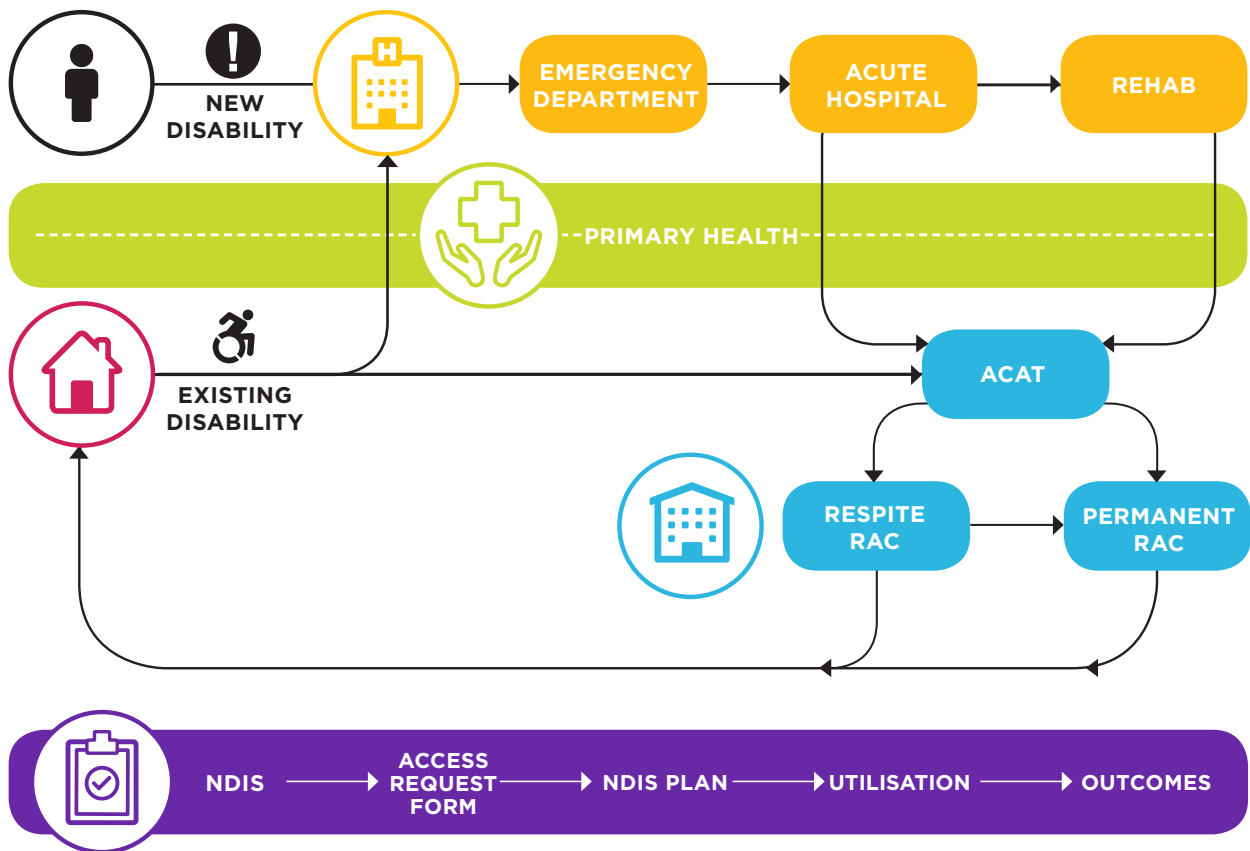
The Summer Foundation exists to permanently stop young people with disability from being forced into residential aged care, ensuring people with disability have access to the support required to be in control of where, how and with whom they live.

THE ISSUE

There are approximately 4,106* young people under 65 living in aged care. More than half receive a visit from a friend less than once a year. Almost half are in a partner relationship, and more than 1 in 4 are parents of school age children.

The issue is complex and crosses multiple settings and sectors, including hospitals, housing, disability and primary health.

The system we seek to influence:



KEY:	■ HOSPITALS	■ PRIMARY HEALTH	■ AGED CARE	■ NDIS	■ HOUSING
-------------	---	---	---	--	---

ACAT = AGED CARE ASSESSMENT TEAM
 RAC = RESIDENTIAL AGED CARE
 NDIS = NATIONAL DISABILITY INSURANCE SCHEME

*AS AT 31 MARCH 2021

HOW WE WORK

Our strategy is to influence, challenge and build capacity of the systems, policies and markets that need to change; to permanently eliminate the need for young people with disability to live in aged care.

We focus on unique, high impact interventions that complement the efforts of government, relevant sectors, markets and other organisations.

The Summer Foundation uses the following tools:



EVIDENCE BASE

Our research informs the development and evaluation of potential solutions, resources and tools.



EXPERT KNOWLEDGE FROM LIVED EXPERIENCE

We build on the expert knowledge from those with lived experience of the issue of young people in aged care to inform, co-design and evaluate our resources, tools and interventions.



KNOWLEDGE OF GOVERNMENT AGENDA AND DRIVERS

We leverage our knowledge of government drivers to establish best practice policy, to facilitate understanding and implementation of policy and inform government agenda.



CLINICAL EXPERIENCE

We use clinical experience that tells us what is happening on the ground to develop and share resources and tools designed to build the capacity of the system and market users.



DEMONSTRATION PROJECTS OR SOCIAL ENTERPRISES

We design, test, evaluate and improve potential solutions and market interventions to develop social enterprises.

WHAT IS SUCCESS

In 5 years we expect the Summer Foundation will have achieved its purpose. With the exception of ongoing entities such as Summer Housing and the Housing Hub which originated with the Summer Foundation, there will be no ongoing need for the organisation.

There is significant national momentum surrounding the issue of young people in aged care. This momentum is driven by the opportunity afforded by the NDIS, the strong recommendations of the Aged Care Royal Commission, and the revised targets in the Federal Government's *Young People in Aged Care Action Plan*:

- No people under the age of 65 entering aged care by 2022
- No people under the age of 45 living in aged care by 2022
- No people under the age of 65 living in aged care by 2025

We will regard the issue of young people in aged care as resolved when the systems, policy settings and markets consistently enable people with disability to live where, how and with whom they choose; experiencing choice and control equal to people without disability.



STRATEGIC PRIORITIES

To achieve success, these outcomes must be realised across the following 4 strategic priorities.



HOUSING

NDIS participants with complex support needs can readily access a range of housing options which align with their needs and preferences.



PREVENTING NEW ADMISSIONS TO RAC

NDIS participants with complex needs in hospitals are supported to successfully return to community living, where and how they choose. The services, supports and workforce to maintain community living are available and well skilled.



AGED CARE

The only young people living in RAC are there due to exceptional circumstances, it is an informed choice, and they are connected to effective NDIS plans which they are supported to implement.




OPERATIONAL EXCELLENCE

Provides cost effective and excellent service to look after and support the broader Summer Foundation team and maximise impact. Operational processes are streamlined to reduce admin burden.


MEASURING IMPACT

In recognition of the rapidly shifting context in which we operate, our strategy references targets over both a 2 and a 5 year horizon.


HOUSING

 2025 Target(s)	2022 Target(s)
<p>The Summer Foundation's data including data on housing seeker's needs and preferences is routinely used by housing providers to inform supply decisions and benchmark and continuously improve the built design, technology and support provided to tenants living in SDA properties</p>	<p>The Housing Hub platform is the market leader, with 3,000 profiles of SDA eligible people, greatest number of properties listed, and superior functionality for users</p> <p>We have supported an additional 600 people to be offered tenancies in new SDA</p> <p>The Tenancy Matching Service has achieved profitability</p> <p>Collect, analyse and publish data about the SDA market and performance of the NDIA to support an emerging SDA market</p>

PREVENTING NEW ADMISSIONS TO RAC

 2025 Target(s)	2022 Target(s)
<p>80% reduction in the number of days inpatients are waiting for NDIS processes (<i>current average is 5 days for eligibility and 34 days for plan approval</i>)</p> <p>Primary Health Networks across Australia are working with people with disability to design, implement and evaluate the impact of local interventions on the health outcomes of NDIS participants</p>	<p>50% reduction in the number of days inpatients are waiting for health processes & 30% reduction in the number of people under 65 discharged from inpatient rehabilitation to aged care</p> <p>Engage 50 participants in the evaluation of YPIRAC outcomes</p> <p>Design an evidence based scalable model of working with one PHN and people with disability to design and implement process change, information, resources and tools to improve the quality of primary health services provided to people with disability</p>

AGED CARE

 2025 Target	2022 Target(s)
100% reduction in the number of young people entering RAC	Federal Government YPIRAC targets for 2022 have been achieved with no people under the age of 65 entering aged care and no people under the age of 45 living in aged care

OPERATIONAL EXCELLENCE

 2025 Target	2022 Target(s)
The Summer Foundation has achieved its purpose, there is no ongoing need for the organisation. The Summer Foundation has seeded ongoing entities that are viable and self sustaining (e.g. social enterprises and or DPOs).	<p>Our leadership, systems and processes support the effective and efficient delivery of our strategy to a minimum of 80% internal satisfaction</p> <p>There is a minimum 80% internal satisfaction that we are working in alignment with our self described organisational principles</p> <p>We welcome and value diversity and lived experience, and a minimum of 30% of our staff and 40% Board are people with disability</p>

Summer Foundation Ltd. ABN: 90 117 719 516
PO Box 208, Blackburn VIC 3130
P: 1300 626 560 E: info@summerfoundation.org.au
www.summerfoundation.org.au

Connect with us:

 [SummerFoundationLtd](https://www.facebook.com/SummerFoundationLtd)  [summer-foundation-ltd](https://www.linkedin.com/company/summer-foundation-ltd)
 [@SummerFoundtn](https://twitter.com/SummerFoundtn)  [SummerFoundationLtd](https://www.youtube.com/SummerFoundationLtd)
 [summerfoundation](https://www.instagram.com/summerfoundation)