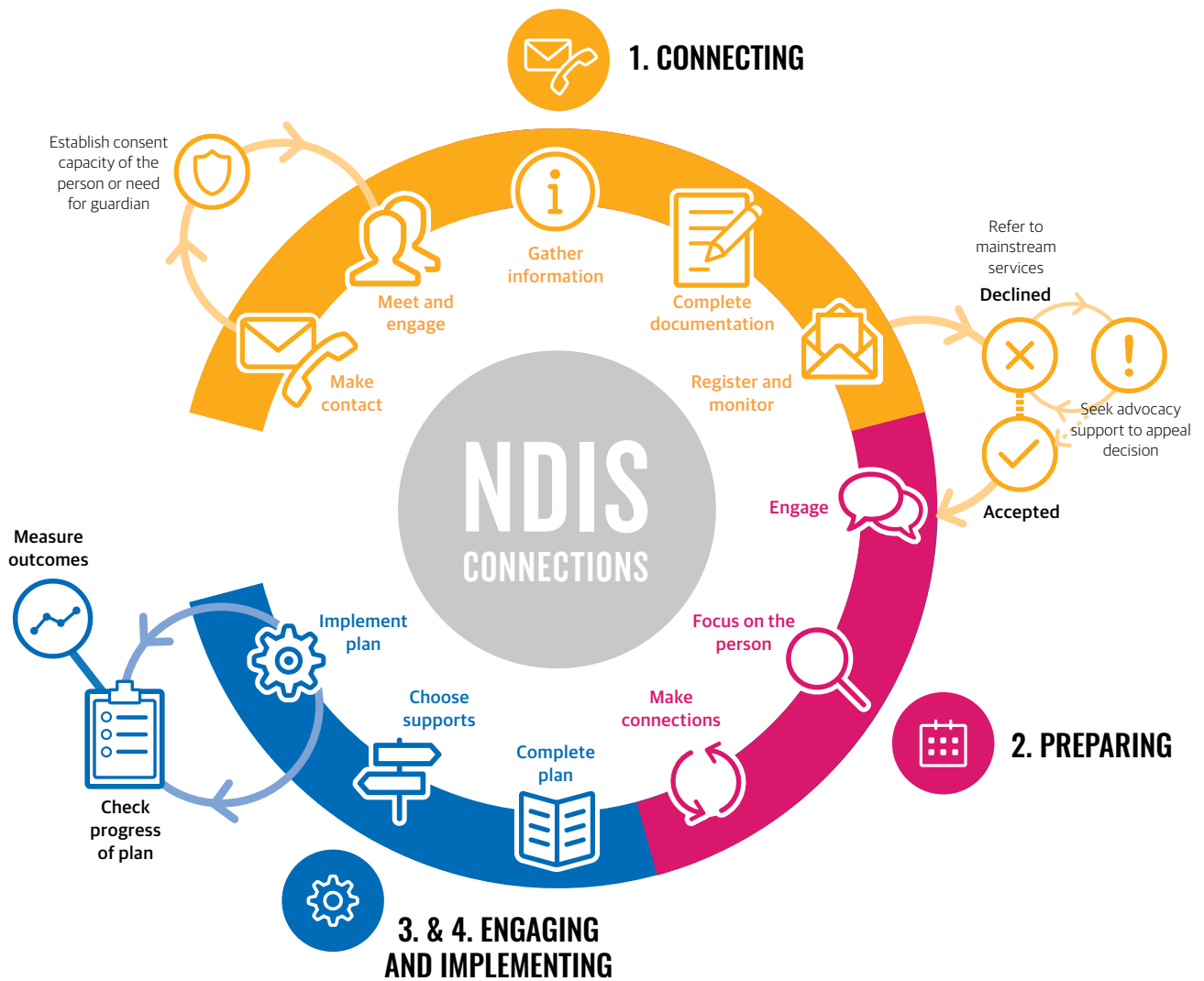


NDIS CONNECTIONS PROCESS

The following diagram indicates the usual path required for you to follow, in working alongside the young person as they navigate their way towards securing an individualised outcome through the NDIS. Most of the connecting work takes place in stage 1 of the process. At stages 2 and 3, the young person is primarily working with the NDIA itself, and you may take on more of a support or advocacy role.



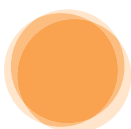
FOR MORE INFORMATION

For secondary consultation or training based on the Practice Guide, please contact Summer Foundation on 1300 626 560 or email us at info@summerfoundation.org.au



DOWNLOAD THE PRACTICE GUIDE:

www.summerfoundation.org.au/practice-guide



SUMMER FOUNDATION

www.summerfoundation.org.au