



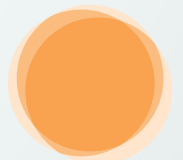
# THE COMMUNITY INTEGRATION QUESTIONNAIRE -REVISED

Australian Normative Data for Adults  
of Working Age including Measurement  
of Electronic Social Networking

---

**Libby Callaway, Di Winkler, Alice Tippett,  
Christine Migliorini, Natalie Herd and Barry Willer.**

SUMMER  
FOUNDATION





## CITATION GUIDE

Callaway, L., Winkler, D., Tippett, A., Migliorini, C., Herd, N. & Willer, B. (2014). *The Community Integration Questionnaire-Revised (CIQ-R)*. Melbourne, Australia: Summer Foundation Ltd.

Ms Libby Callaway <sup>1,2</sup>

Dr Di Winkler <sup>1</sup>

Ms Alice Tippett <sup>1</sup>

Dr Christine Migliorini <sup>2</sup>

Dr Natalie Herd <sup>3</sup>

Professor Barry Willer <sup>4</sup>

<sup>1</sup> Summer Foundation Ltd, Blackburn, Melbourne, AUSTRALIA

<sup>2</sup> Department of Occupational Therapy, Monash University, Frankston, AUSTRALIA

<sup>3</sup> Empirica Research, Melbourne, AUSTRALIA

<sup>4</sup> University at Buffalo in Buffalo, New York, USA

---

The moral right of the author has been asserted.

This report is Copyright © 2014 Summer Foundation Ltd and must not be reproduced in whole or in part without written permission from Summer Foundation Ltd.

Professor Barry Willer holds the copyright to the original CIQ and can be contacted via email at [bswiller@buffalo.edu](mailto:bswiller@buffalo.edu)

Permission to use the CIQ-R should be requested by contacting Summer Foundation via email at [info@summerfoundation.org.au](mailto:info@summerfoundation.org.au) or Barry Willer at [bswiller@buffalo.edu](mailto:bswiller@buffalo.edu)

ISBN 978-0-9805980-3-2

---

## ACKNOWLEDGEMENT

This project was funded by the Transport Accident Commission (TAC), through the Institute for Safety, Compensation and Recovery Research (ISCR).

# CONTENTS

List of Tables	4	Psychometric Properties of the CIQ-R	29
Foreword	9	Normative Data	33
History of the CIQ	11	Home Integration Subscale	45
Revision of the CIQ and gathering normative data	12	Social Integration Subscale	57
Methodology	12	Productivity Subscale	69
Description of the CIQ-R	14	Electronic Social Networking Subscale	81
The Community Integration Questionnaire-Revised (CIQ-R)	17	References/Appendix	93
Scoring of the CIQ-R	21		

# LIST OF TABLES

## Psychometric Properties of the CIQ-R

---

<i>Table</i>	<i>Title</i>	<i>Page</i>
1	Test-retest reliability	30

## Normative Data

---

### CIQ-R Total Summary Statistics

<i>Table</i>	<i>Title</i>	<i>Page</i>
2	Overall CIQ-R Summary Statistics	33
3	Overall CIQ-R means, standard deviations and range by Sex	33
4	Overall CIQ-R means, standard deviations and range by Age	33
5	Overall CIQ-R means, standard deviations and range by Education	34
6	Overall CIQ-R means, standard deviations and range by Income	34
7	Overall CIQ-R means, standard deviations and range by Co-residency status	34
8	Overall CIQ-R means, standard deviations and range by Area of residence	34
9	Overall CIQ-R means and standard deviations by Age and Sex	35
10	Overall CIQ-R means and standard deviations by Education and Sex	35
11	Overall CIQ-R means and standard deviations by Income and Sex	35
12	Overall CIQ-R means and standard deviations by Co-residency status and Sex	36
13	Overall CIQ-R means and standard deviations by Area of residence and Sex	36
14	Overall CIQ-R means and standard deviations by Age and Education	36
15	Overall CIQ-R means and standard deviations by Age and Income	37
16	Overall CIQ-R means and standard deviations by Age and Co-residency status	38
17	Overall CIQ-R means and standard deviations by Age and Area of residence	38
18	Overall CIQ-R means and standard deviations by Education and Area of residence	39
19	Overall CIQ-R means and standard deviations by Education and Co-residency status	39
20	Overall CIQ-R means and standard deviations by Income and Co-residency status	39
21	Overall CIQ-R means and standard deviations by Income and Area of residence	40
22	Overall CIQ-R means and standard deviations by Income and Education	41
23	Overall CIQ-R means and standard deviations by Area of Residence and Co-residency status	41

## Home Integration Summary Statistics

<i>Table</i>	<i>Title</i>	<i>Page</i>
24	Home Integration mean, standard deviation and range	45
25	Home Integration means, standard deviations and range by Sex	45
26	Home Integration means, standard deviations and range by Age	45
27	Home Integration means, standard deviations and range by Education	45
28	Home Integration means, standard deviations and range by Income	45
29	Home Integration means, standard deviations and range by Co-residency status	46
30	Home Integration means, standard deviations and range by Area of residence	46
31	Home Integration means and standard deviations by Age and Sex	46
32	Home Integration means and standard deviations by Education and Sex	46
33	Home Integration means and standard deviations by Income and Sex	47
34	Home Integration means and standard deviations by Co-residency status and Sex	47
35	Home Integration means and standard deviations by Area of residence and Sex	47
36	Home Integration means and standard deviations by Age and Education	48
37	Home Integration means and standard deviations by Age and Income	49
38	Home Integration means and standard deviations by Age and Co-residency status	50
39	Home Integration means and standard deviations by Age and Area of residence	50
40	Home Integration means and standard deviations by Education and Area of residence	51
41	Home Integration means and standard deviations by Education and Co-residency status	51
42	Home Integration means and standard deviations by Income and Co-residency status	51
43	Home Integration means and standard deviations by Income and Area of residence	52
44	Home Integration means and standard deviations by Income and Education	53
45	Home Integration means and standard deviations by Area of residence and Co-residency status	54

## Social Integration Summary Statistics

<i>Table</i>	<i>Title</i>	<i>Page</i>
46	Social Integration mean, standard deviation and range	57
47	Social Integration means, standard deviations and range by Sex	57
48	Social Integration means, standard deviations and range by Age	57
49	Social Integration means, standard deviations and range by Education	57
50	Social Integration means, standard deviations and range by Income	57
51	Social Integration means, standard deviations and range by Co-residency status	58
52	Social Integration means, standard deviations and range by Area of residence	58
53	Social Integration means and standard deviations by Age and Sex	58
54	Social Integration means and standard deviations by Education and Sex	58
55	Social Integration means and standard deviations by Income and Sex	59
56	Social Integration means and standard deviations by Co-residency status and Sex	59
57	Social Integration means and standard deviations by Area of residence and Sex	59
58	Social Integration means and standard deviations by Age and Education	60
59	Social Integration means and standard deviations by Age and Income	61
60	Social Integration means and standard deviations by Age and Co-residency status	62
61	Social Integration means and standard deviations by Age and Area of residence	62
62	Social Integration means and standard deviations by Education and Area of residence	63
63	Social Integration means and standard deviations by Education and Co-residency status	63
64	Social Integration means and standard deviations by Income and Co-residency status	63
65	Social Integration means and standard deviations by Income and Area of residence	64
66	Social Integration means and standard deviations by Income and Education	64
67	Social Integration means and standard deviations by Co-residency status and Area of residence	65

## Productivity Summary Statistics

<i>Table</i>	<i>Title</i>	<i>Page</i>
68	Productivity mean, standard deviation and range	69
69	Productivity means, standard deviations and range by Sex	69
70	Productivity means, standard deviations and range by Age	69
71	Productivity means, standard deviations and range by Education	69
72	Productivity means, standard deviations and range by Income	69
73	Productivity means, standard deviations and range by Co-residency status	70
74	Productivity means, standard deviations and range by Area of residence	70
75	Productivity means and standard deviations by Age and Sex	70
76	Productivity means and standard deviations by Education and Sex	70
77	Productivity means and standard deviations by Income and Sex	71
78	Productivity means and standard deviations by Co-residency status and Sex	71
79	Productivity means and standard deviations by Area of residence and Sex	71
80	Productivity means and standard deviations by Age and Education	72
81	Productivity means and standard deviations by Age and Income	73
82	Productivity means and standard deviations by Age and Co-residency status	74
83	Productivity means and standard deviations by Age and Area of residence	74
84	Productivity means and standard deviations by Education and Area of residence	74
85	Productivity means and standard deviations by Education and Co-residency status	75
86	Productivity means and standard deviations by Income and Co-residency status	75
87	Productivity means and standard deviations by Income and Area of residence	76
88	Productivity means and standard deviations by Income and Education	77
89	Productivity means and standard deviations by Co-residency status and Area of residence	77

## Electronic Social Networking (ESN) Summary Statistics

<i>Table</i>	<i>Title</i>	<i>Page</i>
90	ESN mean, standard deviation and range	81
91	ESN means, standard deviations and range by Sex	81
92	ESN means, standard deviations and range by Age	81
93	ESN means, standard deviations and range by Education	81
94	ESN means, standard deviations and range by Income	82
95	ESN means, standard deviations and range by Co-residency status	82
96	ESN means, standard deviations and range by Area of residence	82
97	ESN means and standard deviations by Age and Sex	82
98	ESN means and standard deviations by Education and Sex	83
99	ESN means and standard deviations by Income and Sex	83
100	ESN means and standard deviations by Co-residency status and Sex	83
101	ESN means and standard deviations by Area of residence and Sex	83
102	ESN means and standard deviations by Age and Education	84
103	ESN means and standard deviations by Age and Income	85
104	ESN means and standard deviations by Age and Co-residency status	86
105	ESN means and standard deviations by Age and Area of residence	86
106	ESN means and standard deviations by Education and Area of residence	86
107	ESN means and standard deviations by Education and Co-residency status	87
108	ESN means and standard deviations by Income and Co-residency status	87
109	ESN means and standard deviations by Income and Area of residence	88
110	ESN means and standard deviations by Income and Education	89
111	ESN means and standard deviations by Co-residency status and Area of residence	89

## Appendix

---

1A	Demographic characteristics of the normative sample	94
----	---	----



# FOREWORD

I authored the Community Integration Questionnaire (CIQ) a little more than 20 years ago. At the time there were few instruments available to assess outcomes of rehabilitation after traumatic brain injury (TBI) and even fewer instruments that appeared to capture the goals of the people who lived with the effects of TBI. Since its publication, the CIQ has been translated into a dozen different languages and been used in the evaluation of various disabling conditions such as stroke, spinal cord injury, developmental disabilities, mental illness, and of course, TBI.

Producing an instrument that is used for scientific purposes is a little like having a baby. You feel entirely responsible as you nurture and assist the child to develop. With time, however, the child becomes an independent being and others take on various roles in educating your child in the ways of life. At some point you realise your child belongs to society and you no longer have any real say in what transpires. You only can hope and pray you laid a good foundation.

I often get asked questions about the CIQ and how it gets used for research or program evaluation and the truth is, I am not always aware of how useful or enlightening the CIQ is to users. Sometimes I get to review a paper submitted for publication where the CIQ has been used. These rare opportunities allow me to see the research results before they are published and sometimes I can correct an oversight or misconception. I rely on a service to alert me when the CIQ is cited and I usually track down these articles and see how the CIQ was used (or not used). If I am really fortunate, I get emails from the user that describe their experience with the CIQ. I remember a student in Hong Kong who said he expected the CIQ would be highly biased in his culture because men and women do not share household duties. When he completed his study of people with disabilities and an able-bodied comparison group he said the differences between men and women, even in Chinese society, were actually quite small, and men with disabilities had become surprisingly integrated within their homes and families.

When Libby Callaway and Di Winkler (from the Summer Foundation and Monash University) asked me if I would support an effort to establish Australian norms for the CIQ, I was delighted. One of the criticisms of the CIQ was the absence of norms and Libby and Di's plan was to use a survey firm to ensure that the CIQ norms would be population-based. As we talked about this further I told them how I also wanted the CIQ to be expanded to include some questions about the use of technology (such as cell phones and social media). Libby and Di thought this was an excellent idea and added that objective to the project. Libby, Di and their colleagues had taken on a parenting role with the CIQ and I felt the way I do with grandchildren. I love to see how they develop but don't feel responsible for every step and misstep they take.

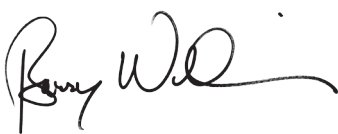
Within a short period of a little more than a year, the research group has developed the technology-use questions (3 items), pilot-tested the items to make sure they made sense, and conducted the

national survey of 2,000 Australians with the now expanded CIQ. They have allowed me to watch this progress from afar and it has been very exciting. This booklet publishes the formal results but I will now briefly share the results that have brought me the most pleasure.

The factor structure of the original CIQ has essentially stood the test of time. When I originally developed the CIQ I had trouble with one item: *Who usually looks after your personal finances such as banking or paying bills?* The item factored into the social integration subscale but easily could have been in the home integration subscale. With the larger database compiled in this current project there was no doubt the item now belonged in 'home integration'. Other than that one item, the factors of the original CIQ remained intact, which was gratifying. The three new items appeared to form a fourth factor (technology use) rather than fit in with social integration as I had predicted.

The most pleasant finding from my perspective was that the CIQ scores were not very different with age, gender or geographic location. There was a slight decline in integration with age, especially in technology use, but the absolute differences were not much more than a point or two. The scores of men were slightly less than women, primarily accounted for by increased scores on home integration for women who do more of the household chores. But again, the absolute differences were around one point. The difference between those that reside in cities versus rural settings was again very slight with urban dwellers more integrated.

Having precise norms for the CIQ will greatly increase its usefulness, especially in Australia since this is the country where the norms were established. Having additional items to assess technological means of communication will also improve the usefulness of the CIQ. I am thrilled that the CIQ has now been brought into the 21st century.

A handwritten signature in black ink, appearing to read 'Barry Willer', with a stylized, cursive script.

Professor Barry Willer

September 2014

# HISTORY OF THE CIQ

Professor Barry Willer and his colleagues in the USA were amongst the first to address and advocate the measurement of community integration in neurotrauma rehabilitation, defining community integration as “effective role performance in community settings” (Willer et al, 1993, p.76). Professor Willer developed a model of community-based practice for people with traumatic brain injury (TBI), called the Whatever It Takes (WIT) Model (Willer & Corrigan, 1994). Internationally, clinicians and families have applied principles of the WIT model to attempt to maximise community integration and participation outcomes for people with severe TBI. Stemming from the WIT model, Professor Willer authored and is the copyright holder of the Community Integration Questionnaire (CIQ: Willer, Ottenbacher, & Coad, 1994).

The CIQ was designed to be a brief, reliable measure of community integration that could be administered directly to the person with a TBI, either face-to-face or over the telephone. It was able to be completed by a proxy, was weighted towards measuring behaviours as opposed to feelings, was value-neutral and sensitive to a wide variety of living situations. It was originally designed for program evaluation purposes, as part of a thorough assessment of a person’s control over their home environment, integration into their social support network and meaningful and productive use of their daytime activities, together with health, functional and financial circumstances.

The CIQ has become one of the most frequently used instruments internationally to measure home, social and productivity integration in the field of brain injury (Kaplan, 2001; Ritchie, Wright-St Clair, Keogh & Gray, 2014). Its use has since extended to a wide range of population groups including people with spinal cord injury (Gontkovsky, Russum & Stokie, 2009), other physical disability (Hirsh, Braden, Craggs & Jensen, 2011), aphasia (Dalemans, de Witte, Beurskens, van den Heuvel & Wade, 2010), brain tumours (Kaplan, 2000), burn injuries (Esselman, Ptacek, Kowalske, Cromes, deLateur & Engrav, 2001) as well as young people with a range of acquired and congenital disabilities who are living in nursing homes for the aged (Winkler, Holgate, Sloan & Callaway, 2012). In Australia, the CIQ is a prescribed measure of community integration used in allied health outcome reporting to government bodies (Winkler, Sloan & Callaway, 2007; Sloan, 2008). The CIQ is now used by the Transport Accident Commission (TAC) in Victoria, Australia, as a key measure of outcome for neurotrauma clients (TAC, 2014).

# REVISION OF THE CIQ AND GATHERING NORMATIVE DATA

Although the CIQ has been used extensively with people with neurotrauma in both clinical research and practice, the utility of the scores has been limited to date by the absence of normative data. The absolute number of a scale score has little meaning by itself. Normative data provides an anchor to interpret an individual's score in relation to those of others. Normative CIQ data can help to understand how well a person has re-integrated into their home, social and productivity roles following neurotrauma. Following on, comparison of normative CIQ data with CIQ scores of people living with a disability can inform service development and provision, as well as resource allocation, to influence integration and participation outcomes for these populations. The call for CIQ normative data has been advocated by others who also use the tool (Kaplan, 2001; Sander et al, 1998).

Further, the addition of a subscale for evaluating electronic social networking (ESN) provides an important addition to refine research and practice of the burgeoning area of technology-enabled participation and its impact on integration.

## METHODOLOGY

### Development of the Electronic Social Networking (ESN) questions

In consultation with a project reference group convened by the researchers, six potential test items that assess ESN as a function of community integration in a population with TBI were developed. The six items were designed to gauge current technology in use (Hallgren, Nygard, & Kottorp, 2011) and were based on data and telecommunications testing by another research group (Rosenberg, Nygard & Kottorp, 2011, p.55). Further modification by the reference group resulted in three draft items being retained. The three questions and a short customised questionnaire collecting feedback responses were piloted on a convenience sample of 124 able-bodied adults aged 18-80 years (90% ≤ 49yrs), 62% female, > 50% with university level education, and all with adequate English language skills. The feedback suggested further refinement of the ESN items, which was subsequently undertaken. Based on these methods, three ESN items were finalised and checked against the Question Appraisal System for survey construction (Willis & Lessler, 1999) to assess clarity and appropriateness of wording, and then included in normative data gathering.

## Demographic data collection

A nationally representative sample of 2000 Australian adults, aged 18-64 years, was recruited by a market and consumer research company. The sample was matched to the demographics of the broader Australian population using Australian Bureau of Statistics categories, with comparative quotas specified for sex, age, state/territory, and metro/regional area of residence. Data from 27 participants who self-reported having some form of acquired or congenital disability were excluded from subsequent analyses. A demographic profile of the remaining 1973 participants is detailed in Table 1A in the Appendix of this booklet. Participants completed basic demographic questions, the original CIQ that was modified for the purposes of this study (described below), and the three ESN items online during November 2013. A subset of 78 participants completed the same items again in February 2014.

For the purposes of this study, the response choices for Item 10 of the original CIQ were modified to ensure that they were appropriate for the normative population. Item 10 in the original CIQ asks *When you participate in leisure activities do you usually do this alone or with others?* The original response choice of *Mostly with friends who have head injuries* was omitted and the option *Mostly with friends who do not have head injuries* was modified to *Mostly with friends*.

Confirmatory factor analysis was conducted using IBM-SPSS AMOS v22.0. All other analyses, including correlation and multiple regression, were conducted using STATA v12.1. Findings from these analyses are detailed in the Psychometric Properties of the CIQ-R section of this booklet.

## The Community Integration Questionnaire-Revised (CIQ-R)

Following the collection of demographic and normative data, revision of the CIQ was completed in 2014, producing the current CIQ-R. Modifications included the assessment of ESN and alterations to the scoring, consistent with the factor structure described in more detail in the Psychometric Properties section starting on page 29 of this booklet. The response categories for Item 10 were also modified to offer utility for people with a range of disability types given the use of the questionnaire with a range of populations to date. Item 10 in the original CIQ asks *When you participate in leisure activities do you usually do this alone or with others?* The original response choice of *Mostly with friends who have head injuries* was modified to *Mostly with friends who have a disability* and the option *Mostly with friends who do not have head injuries* was modified to *Mostly with friends who do not have a disability*. Articles regarding the CIQ-R were being prepared for submission to peer-reviewed journals at the time of publication of this booklet.

# DESCRIPTION OF THE CIQ-R

The CIQ-R has a total of 18 items across four subscales: active participation of the person in the operation of the home (Home Integration; participation in a variety of activities outside the home and interpersonal relations (Social Integration; involvement in employment, education and volunteer activities (Productivity; and participation in electronic social networking (ESN. The three new ESN integration items were added to the original CIQ items (noting the minor rewording of Item 10 as detailed on page 13 to form the CIQ-R. A rating of the level or frequency of involvement in a range of community activities including financial management, grocery shopping, child-care, meal preparation, housework, community access, social activities, employment, study and volunteer work — along with the use of technology-enabled interactions — is undertaken. Scores are primarily created by self-report of performance frequency, with additional weight given on whether or not assistance was obtained.

## Administration Time

The CIQ-R can be completed directly with the person with disability or by proxy. It takes approximately 10-15 minutes to complete. It can be administered in person, by telephone or can be self-administered.

## Source

Permission to use the CIQ-R should be requested by contacting Summer Foundation via email at [info@summerfoundation.org.au](mailto:info@summerfoundation.org.au) or Barry Willer at [bswiller@buffalo.edu](mailto:bswiller@buffalo.edu)



CIQ-R





# The Community Integration Questionnaire-Revised (CIQ-R)

Name: \_\_\_\_\_

Date: \_\_\_\_\_

**1** Who usually does the shopping for groceries or other necessities in your household?

- Yourself alone       Yourself and someone else       Someone else

**2** Who usually prepares meals in your household?

- Yourself alone       Yourself and someone else       Someone else

**3** In your home who usually does normal everyday housework?

- Yourself alone       Yourself and someone else       Someone else

**4** Who usually cares for the children in your home?

- Yourself alone       Yourself and someone else       Someone else  
 Not applicable (no children under 17 yrs in the home)

**5** Who usually plans social arrangements such as get-togethers with family and friends?

- Yourself alone       Yourself and someone else       Someone else

**6** Who usually looks after your personal finances, such as banking or paying bills?

- Yourself alone       Yourself and someone else       Someone else

**7** Approximately how many times a month do you usually participate in shopping outside your home?

- 5 or more       1-4 times       Never

**8** Approximately how many times a month do you usually participate in leisure activities such as movies, sports, restaurants, etc?

- 5 or more       1-4 times       Never

**9** Approximately how many times a month do you usually visit friends or relatives?

- 5 or more       1-4 times       Never

**10** When you participate in leisure activities do you usually do this alone or with others?

- Mostly alone       Mostly with family members       Mostly with friends who have a disability  
 Mostly with friends who do not have a disability       With a combination of family and friends

**11** Do you have a best friend in whom you confide?

- Yes  No

**12** How often do you travel outside the home?

- Almost every day  Almost every week  Seldom / never (less than once per week)

**13** Please check the answer that best corresponds to your current (during the past month) work situation:

- Full-time (more than 20 hours per week)  
 Part-time (less than or equal to 20 hours per week)  
 Not working, but actively looking for work  
 Not working, not looking for work  
 Not applicable, retired due to age

**14** Please check the answer that best corresponds to your current (during the past month) school or training program situation:

- Full-time  
 Part-time  
 Not attending school or training program  
 Not applicable, retired due to age

**15** In the past month, how often did you engage in volunteer activities?

- 5 or more  1-4 times  Never

**16** How often do you write to people for social contact using the Internet (e.g., email, social networking sites such as Facebook)?

- Every day / most days  Almost every week  Seldom / never

**17** How often do you talk to people for social contact using an online video link (e.g. Skype, FaceTime)?

- Every day / most days  Almost every week  Seldom / never

**18** How often do you make social contact with people by talking or text messaging using your phone?

- Every day / most days  Almost every week  Seldom / never

Comments:



# SCORING



# SCORING OF THE CIQ-R

Given the four-factor model described in more detail in the Psychometric Properties chapter starting on page 29, the scoring method for the CIQ-R was revised. Scores for Item 6 are now included in the calculation of the Home Integration subscale instead of the Social Integration subscale. Three new items that reflect electronic social networking were appended to the scale, forming the new ESN subscale. The total CIQ-R score now comprises the sum of all four subscales. The following is the scoring method of the total CIQ-R, as well as the individual subscales.

## Home Integration Subscale

### 1. Who usually does the shopping for groceries or other necessities in your household?

<b>Answer</b>	<b>Score</b>
Yourself alone	2
Yourself and someone else	1
Someone else	0

### 2. Who usually prepares meals in your household?

<b>Answer</b>	<b>Score</b>
Yourself alone	2
Yourself and someone else	1
Someone else	0

### 3. In your home who usually does the normal everyday housework?

<b>Answer</b>	<b>Score</b>
Yourself alone	2
Yourself and someone else	1
Someone else	0

### 4. Who usually cares for the children in your home?

<b>Answer</b>	<b>Score</b>
Yourself alone	2
Yourself and someone else	1
Someone else	0
Not applicable / no children under 17 yrs in home	Score as average of Items 1, 2, 3 & 5

**5. Who usually plans social arrangements such as get-togethers with family and friends?**

<b>Answer</b>	<b>Score</b>
Yourself alone	2
Yourself and someone else	1
Someone else	0

**6. Who usually looks after your personal finances, such as banking and paying bills?**

<b>Answer</b>	<b>Score</b>
Yourself alone	2
Yourself and someone else	1
Someone else	0

**Home Integration Score = Sum of Items 1, 2, 3, 4, 5, 6**  
**Potential score range = 0-12**

## Social Integration Subscale

**7. Approximately how many times a month do you usually participate in shopping outside your home?**

<b>Answer</b>	<b>Score</b>
5 or more	2
1-4 times	1
Seldom / never	0

**8. Approximately how many times a month do you usually participate in leisure activities such as movies, sports, restaurants, etc?**

<b>Answer</b>	<b>Score</b>
5 or more	2
1-4 times	1
Seldom / never	0

**9. Approximately how many times a month do you usually visit your friends and relatives?**

<b>Answer</b>	<b>Score</b>
5 or more	2
1-4 times	1
Seldom / never	0

**10. When you participate in leisure activities do you usually do this alone or with others?**

<b>Answer</b>	<b>Score</b>
Mostly alone	0
Mostly with family members	1
Mostly with friends who have a disability	1
Mostly with friends who do not have a disability	2
With a combination of family and friends	2

**11. Do you have a best friend in whom you confide?**

<b>Answer</b>	<b>Score</b>
Yes	2
No	0

**Social Integration Score = Sum of Items 7, 8, 9, 10, And 11**  
**Potential score range = 0-10**

## Productivity Subscale

**12. How often do you travel outside the home?**

<b>Answer</b>	<b>Score</b>
Almost every day	2
Almost every week	1
Seldom / never (less than once per week)	0

**13. Please check the answer below that best corresponds to your current (during the past month) work situation:**

**Answer**

Full-time (more than 20 hours per week)

Part-time (less than or equal to 20 hours per week)

Not working, but actively looking for work

Not working, not looking for work

Not applicable, retired due to age

**14. Please check the answer below that best corresponds to your current (during the past month) school or training program situation:**

**Answer**

Full-time

Part-time

Not attending school or training program

Not applicable, retired due to age

**15. In the past month, how often did you engage in volunteer activities?**

**Answer**

5 or more

1-4 times

Never

**JOBSCHOOL Variable Scoring = (Items 13 to 15)**

**These items, although collected individually, will be combined to form one variable; Jobschool.**

<b>Jobschool</b>	<b>Score</b>
Works full-time AND attends school part-time OR attends school full-time AND works part-time (less than 20 hours per week)	5
Attends school full-time OR works full-time	4
Attends school part-time OR working part-time (less than 20 hours per week)	3
Actively looking for work AND / OR volunteers 5 or more times per month	2
Volunteers 1 to 4 times per month AND not working, not looking for work, not in school	1
Not working, not looking for work, not going to school, no volunteer activities	0

If retired due to age, the Jobschool variable is based on Item 15 (Volunteer activities) only.



If retired from competitive employment due to age, SCORE AS FOLLOWS:

**In the past month, how often did you engage in volunteer activities?**

<b>Answer</b>	<b>Score</b>
5 or more	4
1-4 times	2
Never	0

**Productivity Score = Sum of Item 12 and Jobschool variable score**  
**Potential score range = 0-7**

## Electronic Social Networking Subscale

**16. How often do you write to people for social contact using the Internet (e.g. email, social networking sites)?**

<b>Answer</b>	<b>Score</b>
Every day or most days	2
Almost every week	1
Seldom / never	0

**17. How often do you talk to people for social contact using an online video link (e.g. Skype, FaceTime)?**

<b>Answer</b>	<b>Score</b>
Every day or most days	2
Almost every week	1
Seldom / never	0

**18. How often do you make social contact with people by talking or text messaging using your phone?**

<b>Answer</b>	<b>Score</b>
Every day or most days	2
Almost every week	1
Seldom / never	0

**Electronic Social Networking Score = Sum of Items 16, 17, and 18**  
**Potential score range = 0-6**

## TOTAL CIQ-R SCORE

<b>Subscale</b>	<b>Subscale Total</b>
Home Integration Score	12
Social Integration Score	10
Productivity Score	7
Electronic Social Networking Score	6
Total CIQ-R Score =	35

**Total CIQ-R Score = Sum of Home Integration, Social Integration, Productivity, and ESN scores. Potential score range = 0 to 35**



# PSYCHOMETRICS



# PSYCHOMETRIC PROPERTIES OF THE CIQ-R

## Factor Structure

Confirmatory factor analysis revealed all CIQ-R items were normally distributed i.e. absolute values not exceeding 2.0 for skewness or kurtosis. Mardia's Multivariate Coefficient of Kurtosis indicated only slight deviation from multivariate normality. Maximum Likelihood Estimation was used to estimate the structure of the CIQ-R measure. A combination of fit indices was used to evaluate model fit: Comparative Fit Index (CFI) and Tucker Lewis Index (TLI)  $\geq .95$ ; Root Mean Square Error of Approximation (RMSEA)  $\leq .05$ ; and Standardised Root Mean Residual (SRMR) = .06 indicated a good fit. Differences between models were assessed using a practical difference test (i.e. TLI difference of .01 between models), to guard against Type II error.

The first model evaluated an oblique four-factor model; the three original CIQ subscales (Home Integration, Social Integration, Productivity) and the three new ESN items loading onto a single factor. The fit between the model and the data was poor  $\chi^2(98, N = 1073) = 1093.44, p < .001$ ; CFI = .865; TLI = .835; RMSEA = .072; SRMR = .080. Standardised factor loadings indicated that the pathway from Item 6 (i.e. *Who usually looks after your personal finances, such as banking or paying bills?*) to the Social factor was weak ( $p = .893$ ). Correlations between Item 6 and other items loading onto the Social factor were also weak, ranging from  $r = < .001$  to .069. The standardised residual covariance matrix also indicated that Item 6 was a source of misfit in the model.

In line with the findings of Sander et al (1999), Modification Indices (MI, i.e. Lagrange Multiplier statistic) suggested that Item 6 should be loaded onto the Home factor (MI = 234.35,  $\lambda = .73$ ). A second model tested an oblique four-factor model in which Item 6 was loaded onto the Home factor instead of the Social factor. Although this model was significantly better than Model 1, model fit was still relatively poor  $\chi^2(98, N = 1073) = 843.82, p < .001$ ; CFI = .899; TLI = .876; RMSEA = .062; SRMR = .059;  $\Delta$ TLI = .04 (Model 2 - Model 1).

Additional sources of model misfit were identified through Modification Indices and the standardised residual covariance matrix. Two re-specifications were made sequentially and model re-estimation followed each re-specification. The first was a cross-loading between Item 7 — *Can you tell me approximately how many times a month you now usually participate in the following activities outside your home? (Shopping)* — and the Home factor (MI = 69.91,  $\lambda = .30$ ), while maintaining the original loading on the Social factor. Given that the Home factor is concerned with domestic activity, it was deemed to be theoretically sound to have the shopping item loading onto this factor. The second re-specification was a free estimation of the error covariance between Item 4 *Who usually cares for the children in your home?* and Item 5 *Who usually plans social arrangements such as get-togethers with family and friends?* (MI = 64.73,  $\lambda = .028$ ). Both of these modifications generated significant improvements in model fit ( $\Delta$ TLI  $> .01$ ). The final model (Model 4)

demonstrated acceptable fit  $\chi^2(96, N = 1073) = 683.16, p < .001$ ; CFI = .921; TLI = .901; RMSEA = .056; SRMR = .051. For subsequent analyses, scores for Item 6 were included in the calculation of the Home Competency subscale instead of the Social Integration subscale. Given that the factor loading for Item 7 was larger for the Social factor than the Home factor, scores from this item were used in the calculation of the Social Integration subscale retaining original scale item distribution.

## Reliability

To determine the reliability of the CIQ and each of its subscales over time, including the new ESN subscale, test-retest reliability analyses were conducted with 78 respondents. Correlations between scores collected at time one (T1) and then again at time two (T2) 10 weeks later were relatively high, particularly for the Home Integration subscale. The data is presented in Table 1.

**Table 1 Test-retest reliability (N = 78)**

	<i>Mean (SD) T1</i>	<i>Mean (SD) T2</i>	<i>Pearson's r</i>	<i>Paired samples t-test</i>
Total CIQ score	19.05 (4.31)	18.98 (3.47)	.84	$t(77) = 0.28, p = .78$
Total CIQ-Revised score	21.79 (5.26)	21.59 (4.39)	.84	$t(77) = 0.62, p = .54$
Home Integration score (rev.) <sup>a</sup>	8.23 (2.60)	8.00 (2.48)	.94	$t(77) = 2.27, p < .05$
Social Integration score (rev.) <sup>a</sup>	6.42 (2.04)	6.47 (1.86)	.66	$t(77) = -0.28, p = .78$
Productivity score	4.40 (1.83)	4.50 (1.79)	.78	$t(77) = -0.76, p = .45$
ESN Integration score	2.74 (1.60)	2.62 (1.60)	.70	$t(77) = 0.90, p = .36$

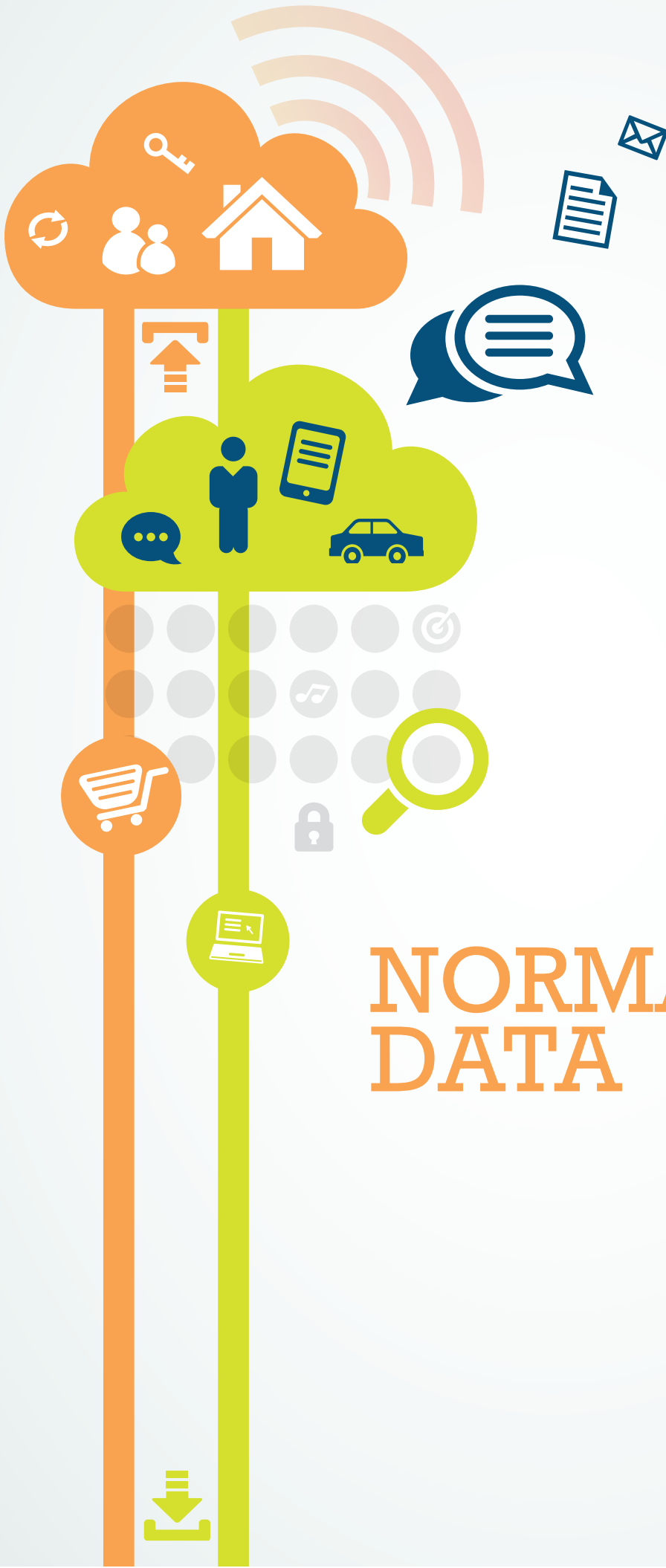
<sup>a</sup> rev = revised

Paired samples *t*-tests revealed that there was very little change over time in absolute scores. Although mean Home Integration subscale scores decreased significantly from T1 to T2, the high correlation for this subscale suggests that decreases were relatively consistent across participants. The difference between the means was 0.23, both standard deviations were approximately 2.5 and possible score range for the subscale was 0-12. While the finding may be statistically significant, the difference does not appear to be substantive.

To further explore the extent to which the new ESN items capture an additional type of community integration that is not already captured in the existing CIQ items, the total CIQ scores (excluding the ESN items) were correlated with scores from the ESN subscale. The moderate positive correlation between the two scores,  $r(1971) = .33, p < .001$ , indicates that even though the two scores were related, they appeared to capture different aspects of integration, suggesting that the new items added additional information.

## Comparative analyses with original CIQ data

It is recommended that the newer CIQ-R be used in all future activities. Nevertheless, it is still possible to make some useful comparisons with data collected using the original CIQ. In these instances, it is recommended that Item 6 be summed within the Home Integration subscale as advised in the CIQ-R scoring method, rather than the Social Integration subscale as was recommended in the original scoring. Once this has been achieved, the three subscales — Home Integration, Social Integration and Productivity — will be directly comparable with the normative data in this booklet.



# NORMATIVE DATA





# NORMATIVE DATA

Two thousand Australians of working age were surveyed online. They were given the CIQ to complete, along with the three ESN questions and a demographic survey. Twenty-seven participants who self-reported having some form of acquired or congenital disability were excluded from subsequent analyses to ensure that the normative data was representative of the broader population. The demographic data of the remaining 1973 participants is presented in Table 1A in the Appendix, along with a table of all normative data CIQ-R item mean scores inside the back cover of this booklet.

## CIQ-R Total Summary Statistics

### Normative data for Overall CIQ-R

**Table 2 Overall CIQ-R summary statistics**

<i>Total</i>	<i>N</i>	<i>Minimum</i>	<i>Maximum</i>	<i>Mean</i>	<i>Std. Deviation</i>
CIQ-R Total	1973	2	34	22.33	4.74

**Table 3 Overall CIQ-R means, standard deviations and range by Sex**

<i>Sex</i>	<i>N</i>	<i>Minimum</i>	<i>Maximum</i>	<i>Mean</i>	<i>Std. Deviation</i>
Male	983	2	33	21.39	4.87
Female	990	6	34	23.27	4.40

**Table 4 Overall CIQ-R means, standard deviations and range by Age**

<i>Age</i>	<i>N</i>	<i>Minimum</i>	<i>Maximum</i>	<i>Mean</i>	<i>Std. Deviation</i>
18-29 yrs	566	5	33	23.15	4.64
30-39 yrs	427	3.25	34	22.98	4.57
40-49 yrs	387	2	32	22.00	4.48
50-59 yrs	418	8	33	21.46	4.90
60-64 yrs	175	7	33	20.94	4.88

**Table 5 Overall CIQ-R means, standard deviations and range by Education**

<i>Education</i>	<i>N</i>	<i>Minimum</i>	<i>Maximum</i>	<i>Mean</i>	<i>Std. Deviation</i>
High school or less	632	2	33	21.55	4.87
TAFE / Community College	618	6	32.75	21.77	4.74
University	723	5	34	23.50	4.38

**Table 6 Overall CIQ-R means, standard deviations and range by Income**

<i>Income</i>	<i>N</i>	<i>Minimum</i>	<i>Maximum</i>	<i>Mean</i>	<i>Std. Deviation</i>
\$30,000 or less	323	2	32.75	21.30	5.33
\$30,001-\$60,000	429	8	33	21.61	5.12
\$60,001-\$90,000	450	6	32	22.49	4.46
\$90,001-\$120,000	333	8.25	33	22.88	4.52
\$120,001-\$150,000	229	12	32	23.03	4.11
\$150,001+	209	8	34	23.43	3.95

**Table 7 Overall CIQ-R means, standard deviations and range by Co-residency status**

<i>Co-residency status</i>	<i>N</i>	<i>Minimum</i>	<i>Maximum</i>	<i>Mean</i>	<i>Std. Deviation</i>
Live with other people	1704	2	34	21.92	4.60
Live alone	269	6	33	24.95	4.75

**Table 8 Overall CIQ-R means, standard deviations and range by Area of residence**

<i>Area of residence</i>	<i>N</i>	<i>Minimum</i>	<i>Maximum</i>	<i>Mean</i>	<i>Std. Deviation</i>
A capital city or its surrounding suburbs	1324	3.25	34	22.81	4.52
Outside of a capital city	649	2	33	21.35	5.01

**Table 9 Overall CIQ-R means and standard deviations by Age and Sex**

<b>Age</b>	<b>Sex</b>	<b>N</b>	<b>Mean</b>	<b>Std. Deviation</b>
18-29 yrs	Male	201	22.99	4.74
	Female	365	23.24	4.59
30-39 yrs	Male	211	22.21	4.80
	Female	216	23.73	4.22
40-49 yrs	Male	215	20.85	4.56
	Female	172	23.44	3.93
50-59 yrs	Male	256	20.59	4.90
	Female	162	22.82	4.58
60-64 yrs	Male	100	19.64	4.74
	Female	75	22.66	4.55

**Table 10 Overall CIQ-R means and standard by Education and Sex**

<b>Education</b>	<b>Sex</b>	<b>N</b>	<b>Mean</b>	<b>Std. Deviation</b>
High school or less	Male	298	20.46	4.98
	Female	334	22.53	4.56
TAFE / Community College	Male	315	20.57	4.85
	Female	303	23.01	4.28
University	Male	370	22.83	4.46
	Female	353	24.20	4.19

**Table 11 Overall CIQ-R means and standard deviations by Income and Sex**

<b>Income</b>	<b>Sex</b>	<b>N</b>	<b>Mean</b>	<b>Std. Deviation</b>
\$30,000 or less	Male	122	19.84	5.79
	Female	201	22.19	4.83
\$30,001-\$60,000	Male	193	20.63	5.43
	Female	236	22.41	4.71
\$60,001-\$90,000	Male	238	21.43	4.55
	Female	212	23.69	4.05
\$90,001-\$120,000	Male	190	21.97	4.84
	Female	143	24.09	3.74
\$120,001-\$150,000	Male	124	21.90	3.96
	Female	105	24.37	3.88
\$150,001+	Male	116	22.71	3.75
	Female	93	24.33	4.01

**Table 12 Overall CIQ-R means and standard deviations by Co-residency status and Sex**

<i>Co-residency status</i>	<i>Sex</i>	<i>N</i>	<i>Mean</i>	<i>Std. Deviation</i>
Live with other people	Male	846	20.87	4.65
	Female	858	22.96	4.31
Live alone	Male	137	24.62	4.99
	Female	132	25.29	4.48

**Table 13 Overall CIQ-R means and standard deviations by Area of residence and Sex**

<i>Area of residence</i>	<i>Sex</i>	<i>N</i>	<i>Mean</i>	<i>Std. Deviation</i>
A capital city or its surrounding suburbs	Male	678	22.01	4.56
	Female	646	23.65	4.32
Outside of a capital city	Male	305	20.00	5.25
	Female	344	22.55	4.47

**Table 14 Overall CIQ-R means and standard deviations by Age and Education**

<i>Age</i>	<i>Education</i>	<i>N</i>	<i>Mean</i>	<i>Std. Deviation</i>
18-29 yrs	High school or less	190	22.11	4.68
	TAFE / Community College	130	22.89	4.76
	University	246	24.09	4.37
30-39 yrs	High school or less	98	22.22	5.42
	TAFE / Community College	132	22.13	4.34
	University	197	23.92	4.08
40-49 yrs	High school or less	122	21.01	4.77
	TAFE / Community College	133	21.63	4.49
	University	132	23.30	3.87
50-59 yrs	High school or less	151	20.80	4.98
	TAFE / Community College	169	21.29	4.90
	University	98	22.76	4.55
60-64 yrs	High school or less	71	21.68	4.24
	TAFE / Community College	54	19.99	5.10
	University	50	20.91	5.40

**Table 15 Overall CIQ-R means and standard deviations by Age and Income**

<i>Age</i>	<i>Income</i>	<i>N</i>	<i>Mean</i>	<i>Std. Deviation</i>
18-29 yrs	\$30,000 or less	112	22.71	5.44
	\$30,001-\$60,000	112	22.52	4.93
	\$60,001-\$90,000	143	23.45	4.39
	\$90,001-\$120,000	84	23.51	3.83
	\$120,001-\$150,000	62	23.50	4.50
	\$150,001+	53	23.59	4.14
30-39 yrs	\$30,000 or less	47	20.41	5.83
	\$30,001-\$60,000	94	22.56	4.18
	\$60,001-\$90,000	98	22.97	4.39
	\$90,001-\$120,000	84	23.94	4.62
	\$120,001-\$150,000	52	23.18	3.89
	\$150,001+	52	24.30	3.97
40-49 yrs	\$30,000 or less	52	20.41	5.64
	\$30,001-\$60,000	69	21.70	5.04
	\$60,001-\$90,000	87	22.00	3.90
	\$90,001-\$120,000	75	22.04	4.29
	\$120,001-\$150,000	48	22.91	3.86
	\$150,001+	56	23.05	3.76
50-59 yrs	\$30,000 or less	66	20.91	4.75
	\$30,001-\$60,000	98	20.29	5.77
	\$60,001-\$90,000	89	21.82	4.67
	\$90,001-\$120,000	69	21.57	4.85
	\$120,001-\$150,000	56	22.39	4.12
	\$150,001+	40	22.94	3.77
60-64 yrs	\$30,000 or less	46	20.35	4.35
	\$30,001-\$60,000	56	20.38	5.26
	\$60,001-\$90,000	33	20.05	4.63
	\$90,001-\$120,000	21	23.40	5.16
	\$120,001-\$150,000	11	23.55	4.03
	\$150,001+	8	21.81	4.32

**Table 16 Overall CIQ-R means and standard deviations by Age and Co-residency status**

<i>Age</i>	<i>Co-residency status</i>	<i>N</i>	<i>Mean</i>	<i>Std. Deviation</i>
18-29 yrs	Live with other people	508	22.82	4.50
	Live alone	58	26.04	4.90
30-39 yrs	Live with other people	382	22.62	4.35
	Live alone	45	25.99	5.29
40-49 yrs	Live with other people	336	21.64	4.36
	Live alone	51	24.39	4.56
50-59 yrs	Live with other people	340	20.87	4.84
	Live alone	78	24.04	4.29
60-64 yrs	Live with other people	138	19.94	4.45
	Live alone	37	24.65	4.69

**Table 17 Overall CIQ-R means and standard deviations by Age and Area of residence**

<i>Age</i>	<i>Area of residence</i>	<i>N</i>	<i>Mean</i>	<i>Std. Deviation</i>
18-29 yrs	A capital city or its surrounding suburbs	400	23.45	4.55
	Outside of a capital city	166	22.43	4.78
30-39 yrs	A capital city or its surrounding suburbs	312	23.35	4.50
	Outside of a capital city	115	21.97	4.64
40-49 yrs	A capital city or its surrounding suburbs	253	22.37	4.14
	Outside of a capital city	134	21.32	4.99
50-59 yrs	A capital city or its surrounding suburbs	265	22.18	4.57
	Outside of a capital city	153	20.21	5.20
60-64 yrs	A capital city or its surrounding suburbs	94	21.30	4.63
	Outside of a capital city	81	20.51	5.16

**Table 18 Overall CIQ-R means and standard deviations by Education and Area of residence**

<i>Education</i>	<i>Area of residence</i>	<i>N</i>	<i>Mean</i>	<i>Std. Deviation</i>
High school or less	A capital city or its surrounding suburbs	392	22.24	4.54
	Outside of a capital city	240	20.43	5.18
TAFE / Community College	A capital city or its surrounding suburbs	376	21.88	4.71
	Outside of a capital city	242	21.60	4.78
University	A capital city or its surrounding suburbs	556	23.85	4.16
	Outside of a capital city	167	22.34	4.90

**Table 19 Overall CIQ-R means and standard deviations by Education and Co-residency status**

<i>Education</i>	<i>Co-residency status</i>	<i>N</i>	<i>Mean</i>	<i>Std. Deviation</i>
High school or less	Live with other people	535	21.12	4.76
	Live alone	97	23.96	4.79
TAFE / Community College	Live with other people	539	21.40	4.69
	Live alone	79	24.28	4.32
University	Live with other people	630	23.05	4.15
	Live alone	93	26.55	4.69

**Table 20 Overall CIQ-R means and standard deviations by Income and Co-residency status**

<i>Income</i>	<i>Co-residency status</i>	<i>N</i>	<i>Mean</i>	<i>Std. Deviation</i>
\$30,000 or less	Live with other people	237	20.92	5.60
	Live alone	86	22.36	4.34
\$30,001-\$60,000	Live with other people	348	20.67	4.91
	Live alone	81	25.63	3.96
\$60,001-\$90,000	Live with other people	397	22.03	4.24
	Live alone	53	26.00	4.54
\$90,001-\$120,000	Live with other people	310	22.54	4.33
	Live alone	23	27.39	4.78
\$120,001-\$150,000	Live with other people	215	22.70	3.96
	Live alone	14	28.11	2.88
\$150,001+	Live with other people	197	23.28	3.65
	Live alone	12	25.90	7.07

**Table 21 Overall CIQ-R means and standard deviations by Income and Area of residence**

<i>Income</i>	<i>Area of residence</i>	<i>N</i>	<i>Mean</i>	<i>Std. Deviation</i>
\$30,000 or less	A capital city or its surrounding suburbs	179	22.13	5.26
	Outside of a capital city	144	20.27	5.24
\$30,001-\$60,000	A capital city or its surrounding suburbs	249	22.02	4.97
	Outside of a capital city	180	21.04	5.28
\$60,001-\$90,000	A capital city or its surrounding suburbs	307	22.82	4.20
	Outside of a capital city	143	21.80	4.92
\$90,001-\$120,000	A capital city or its surrounding suburbs	242	23.26	4.42
	Outside of a capital city	91	21.86	4.65
\$120,001-\$150,000	A capital city or its surrounding suburbs	179	23.35	3.94
	Outside of a capital city	50	21.92	4.52
\$150,001+	A capital city or its surrounding suburbs	168	23.49	3.98
	Outside of a capital city	41	23.16	3.82



**Table 22 Overall CIQ-R means and standard deviations by Income and Education**

<i>Income</i>	<i>Education</i>	<i>N</i>	<i>Mean</i>	<i>Std. Deviation</i>
\$30,000 or less	High school or less	143	20.94	5.48
	TAFE / Community College	108	20.91	4.88
	University	72	22.61	5.52
\$30,001-\$60,000	High school or less	179	20.94	5.08
	TAFE / Community College	155	21.56	5.33
	University	95	22.94	4.62
\$60,001-\$90,000	High school or less	142	21.87	4.41
	TAFE / Community College	146	22.09	4.39
	University	162	23.41	4.45
\$90,001-\$120,000	High school or less	81	22.56	4.81
	TAFE / Community College	105	21.52	4.39
	University	147	24.03	4.17
\$120,001-\$150,000	High school or less	52	22.16	4.17
	TAFE / Community College	61	22.61	4.52
	University	116	23.65	3.78
\$150,001+	High school or less	35	22.70	3.12
	TAFE / Community College	43	22.97	4.04
	University	131	23.77	4.09

**Table 23 Overall CIQ-R means and standard deviations by Co-residency status and Area of Residence**

<i>Co-residency status</i>	<i>Area of residence</i>	<i>N</i>	<i>Mean</i>	<i>Std. Deviation</i>
Live with other people	A capital city or its surrounding suburbs	1154	22.41	4.41
	Outside of a capital city	550	20.89	4.81
Live alone	A capital city or its surrounding suburbs	170	25.53	4.30
	Outside of a capital city	99	23.94	5.32





# HOME INTEGRATION SUBSCALE



# HOME INTEGRATION SUBSCALE

**Table 24** Home Integration mean, standard deviation and range

<i>Subscale</i>	<i>N</i>	<i>Minimum</i>	<i>Maximum</i>	<i>Mean</i>	<i>Std. Deviation</i>
Home Integration	1973	0	12	7.69	2.72

**Table 25** Home Integration means, standard deviations and range by Sex

<i>Sex</i>	<i>N</i>	<i>Minimum</i>	<i>Maximum</i>	<i>Mean</i>	<i>Std. Deviation</i>
Male	983	0	12	7.00	2.74
Female	990	0	12	8.38	2.53

**Table 26** Home Integration means, standard deviations and range by Age

<i>Age</i>	<i>N</i>	<i>Minimum</i>	<i>Maximum</i>	<i>Mean</i>	<i>Std. Deviation</i>
18-29 yrs	566	0	12	7.13	2.82
30-39 yrs	427	0	12	7.84	2.42
40-49 yrs	387	0	12	7.87	2.73
50-59 yrs	418	1.25	12	7.93	2.82
60-64 yrs	175	1.25	12	8.19	2.61

**Table 27** Home Integration means, standard deviations and range by Education

<i>Education</i>	<i>N</i>	<i>Minimum</i>	<i>Maximum</i>	<i>Mean</i>	<i>Std. Deviation</i>
High school or less	632	0	12	7.65	2.99
TAFE / Community College	618	0	12	7.75	2.64
University	723	0	12	7.68	2.54

**Table 28** Home Integration means, standard deviations and range by Income

<i>Income</i>	<i>N</i>	<i>Minimum</i>	<i>Maximum</i>	<i>Mean</i>	<i>Std. Deviation</i>
\$30,000 or less	323	0	12	8.50	3.10
\$30,001-\$60,000	429	1	12	7.96	2.82
\$60,001-\$90,000	450	0	12	7.59	2.56
\$90,001-\$120,000	333	0	12	7.34	2.61
\$120,001-\$150,000	229	2	12	7.28	2.36
\$150,001+	209	0	12	7.13	2.47

**Table 29** Home Integration means, standard deviations and range by Co-residency status

<i>Co-residency status</i>	<i>N</i>	<i>Minimum</i>	<i>Maximum</i>	<i>Mean</i>	<i>Std. Deviation</i>
Live with other people	1704	0	12	7.16	2.47
Live alone	269	0	12	11.04	1.66

**Table 30** Home Integration means, standard deviations and range by Area of residence

<i>Area of residence</i>	<i>N</i>	<i>Minimum</i>	<i>Maximum</i>	<i>Mean</i>	<i>Std. Deviation</i>
A capital city or its surrounding suburbs	1324	0	12	7.65	2.69
Outside of a capital city	649	0	12	7.78	2.80

**Table 31** Home Integration means and standard deviations by Age and Sex

<i>Age</i>	<i>Sex</i>	<i>N</i>	<i>Mean</i>	<i>Std. Deviation</i>
18-29 yrs	Male	201	6.67	2.94
	Female	365	7.38	2.73
30-39 yrs	Male	211	7.14	2.40
	Female	216	8.52	2.24
40-49 yrs	Male	215	6.82	2.62
	Female	172	9.19	2.25
50-59 yrs	Male	256	7.17	2.94
	Female	162	9.13	2.13
60-64 yrs	Male	100	7.30	2.66
	Female	75	9.38	2.03

**Table 32** Home Integration means and standard deviations by Education and Sex

<i>Education</i>	<i>Sex</i>	<i>N</i>	<i>Mean</i>	<i>Std. Deviation</i>
High school or less	Male	298	6.81	3.01
	Female	334	8.40	2.77
TAFE / Community College	Male	315	6.86	2.63
	Female	303	8.67	2.32
University	Male	370	7.27	2.57
	Female	353	8.12	2.45

**Table 33 Home Integration means and standard deviations by Income and Sex**

<i>Income</i>	<i>Sex</i>	<i>N</i>	<i>Mean</i>	<i>Std. Deviation</i>
\$30,000 or less	Male	122	7.98	3.34
	Female	201	8.81	2.91
\$30,001-\$60,000	Male	193	7.06	2.93
	Female	236	8.70	2.51
\$60,001-\$90,000	Male	238	6.91	2.68
	Female	212	8.34	2.18
\$90,001-\$120,000	Male	190	6.92	2.64
	Female	143	7.90	2.47
\$120,001-\$150,000	Male	124	6.58	2.20
	Female	105	8.10	2.29
\$150,001+	Male	116	6.61	2.26
	Female	93	7.78	2.58

**Table 34 Home Integration means and standard deviations by Co-residency status and Sex**

<i>Co-residency status</i>	<i>Sex</i>	<i>N</i>	<i>Mean</i>	<i>Std. Deviation</i>
Live with other people	Male	846	6.34	2.25
	Female	858	7.97	2.42
Live alone	Male	137	11.05	1.86
	Female	132	11.03	1.43

**Table 35 Home Integration means and standard deviations by Area of residence and Sex**

<i>Area of residence</i>	<i>Sex</i>	<i>N</i>	<i>Mean</i>	<i>Std. Deviation</i>
A capital city or its surrounding suburbs	Male	678	7.06	2.64
	Female	646	8.26	2.59
Outside of a capital city	Male	305	6.86	2.93
	Female	344	8.60	2.40

**Table 36 Home Integration means and standard deviations by Age and Education**

<i>Age</i>	<i>Education</i>	<i>N</i>	<i>Mean</i>	<i>Std. Deviation</i>
18-29 yrs	High school or less	190	6.48	3.09
	TAFE / Community College	130	7.48	2.55
	University	246	7.44	2.66
30-39 yrs	High school or less	98	8.05	2.60
	TAFE / Community College	132	7.81	2.47
	University	197	7.76	2.30
40-49 yrs	High school or less	122	7.89	2.85
	TAFE / Community College	133	7.83	2.75
	University	132	7.91	2.61
50-59 yrs	High school or less	151	8.06	2.95
	TAFE / Community College	169	7.84	2.75
	University	98	7.86	2.74
60-64 yrs	High school or less	71	8.93	2.61
	TAFE / Community College	64	7.77	2.69
	University	50	7.61	2.32



**Table 37 Home Integration means and standard deviations by Age and Income**

<i>Age</i>	<i>Income</i>	<i>N</i>	<i>Mean</i>	<i>Std. Deviation</i>
18-29 yrs	\$30,000 or less	112	7.39	3.21
	\$30,001-\$60,000	112	7.37	2.85
	\$60,001-\$90,000	143	7.30	2.48
	\$90,001-\$120,000	84	6.54	2.61
	\$120,001-\$150,000	62	7.15	2.78
	\$150,001+	53	6.51	3.05
30-39 yrs	\$30,000 or less	47	8.01	3.14
	\$30,001-\$60,000	94	8.25	2.37
	\$60,001-\$90,000	98	7.85	2.43
	\$90,001-\$120,000	84	7.85	2.49
	\$120,001-\$150,000	52	7.45	2.01
	\$150,001+	52	7.30	1.90
40-49 yrs	\$30,000 or less	52	9.28	3.07
	\$30,001-\$60,000	69	8.45	2.74
	\$60,001-\$90,000	87	7.83	2.70
	\$90,001-\$120,000	75	7.32	2.71
	\$120,001-\$150,000	48	6.89	2.21
	\$150,001+	56	7.53	2.25
50-59 yrs	\$30,000 or less	66	9.65	2.57
	\$30,001-\$60,000	98	7.84	3.14
	\$60,001-\$90,000	89	7.77	2.75
	\$90,001-\$120,000	69	7.47	2.57
	\$120,001-\$150,000	56	7.42	2.32
	\$150,001+	40	7.14	2.61
60-64 yrs	\$30,000 or less	46	9.15	2.60
	\$30,001-\$60,000	56	8.29	2.86
	\$60,001-\$90,000	33	6.92	2.20
	\$90,001-\$120,000	21	8.17	2.14
	\$120,001-\$150,000	11	8.18	2.32
	\$150,001+	8	7.31	2.11

**Table 38** Home Integration means and standard deviations by Age and Co-residency status

<i>Age</i>	<i>Co-residency status</i>	<i>N</i>	<i>Mean</i>	<i>Std. Deviation</i>
18-29 yrs	Live with other people	508	6.74	2.65
	Live alone	58	10.56	1.80
30-39 yrs	Live with other people	382	7.48	2.20
	Live alone	45	10.86	2.10
40-49 yrs	Live with other people	336	7.39	2.50
	Live alone	51	11.05	1.94
50-59 yrs	Live with other people	340	7.14	2.47
	Live alone	78	11.38	1.19
60-64 yrs	Live with other people	138	7.36	2.26
	Live alone	37	11.30	1.00

**Table 39** Home Integration means and standard deviations by Age and Area of residence

<i>Age</i>	<i>Area of residence</i>	<i>N</i>	<i>Mean</i>	<i>Std. Deviation</i>
18-29 yrs	A capital city or its surrounding suburbs	400	7.09	2.80
	Outside of a capital city	166	7.22	2.88
30-39 yrs	A capital city or its surrounding suburbs	312	7.86	2.35
	Outside of a capital city	115	7.78	2.61
40-49 yrs	A capital city or its surrounding suburbs	253	7.77	2.73
	Outside of a capital city	134	8.08	2.72
50-59 yrs	A capital city or its surrounding suburbs	265	7.97	2.76
	Outside of a capital city	153	7.86	2.92
60-64 yrs	A capital city or its surrounding suburbs	94	8.11	2.60
	Outside of a capital city	81	8.29	2.64

**Table 40 Home Integration means and standard deviations by Education and Area of residence**

<i>Education</i>	<i>Area of residence</i>	<i>N</i>	<i>Mean</i>	<i>Std. Deviation</i>
High school or less	A capital city or its surrounding suburbs	392	7.65	2.93
	Outside of a capital city	240	7.65	3.09
TAFE / Community College	A capital city or its surrounding suburbs	376	7.61	2.68
	Outside of a capital city	242	7.96	2.58
University	A capital city or its surrounding suburbs	556	7.67	2.51
	Outside of a capital city	167	7.71	2.66

**Table 41 Home Integration means and standard deviations by Education and Co-residency status**

<i>Education</i>	<i>Co-residency status</i>	<i>N</i>	<i>Mean</i>	<i>Std. Deviation</i>
High school or less	Live with other people	535	7.03	2.75
	Live alone	97	11.05	1.70
TAFE / Community College	Live with other people	539	7.29	2.42
	Live alone	79	10.90	1.85
University	Live with other people	630	7.17	2.26
	Live alone	93	11.15	1.44

**Table 42 Home Integration means and standard deviations by Income and Co-residency status**

<i>Income</i>	<i>Co-residency status</i>	<i>N</i>	<i>Mean</i>	<i>Std. Deviation</i>
\$30,000 or less	Live with other people	237	7.55	3.02
	Live alone	86	11.10	1.35
\$30,001-\$60,000	Live with other people	348	7.23	2.56
	Live alone	81	11.10	1.40
\$60,001-\$90,000	Live with other people	397	7.14	2.29
	Live alone	53	10.94	1.84
\$90,001-\$120,000	Live with other people	310	7.06	2.39
	Live alone	23	11.13	2.54
\$120,001-\$150,000	Live with other people	215	7.02	2.18
	Live alone	14	11.32	0.93
\$150,001+	Live with other people	197	6.95	2.34
	Live alone	12	10.15	2.75

**Table 43 Home Integration means and standard deviations by Income and Area of residence**

<i>Income</i>	<i>Area of residence</i>	<i>N</i>	<i>Mean</i>	<i>Std. Deviation</i>
\$30,000 or less	A capital city or its surrounding suburbs	179	8.42	3.13
	Outside of a capital city	144	8.59	3.08
\$30,001-\$60,000	A capital city or its surrounding suburbs	249	7.95	2.85
	Outside of a capital city	180	7.99	2.80
\$60,001-\$90,000	A capital city or its surrounding suburbs	307	7.65	2.52
	Outside of a capital city	143	7.44	2.64
\$90,001-\$120,000	A capital city or its surrounding suburbs	242	7.36	2.62
	Outside of a capital city	91	7.29	2.58
\$120,001-\$150,000	A capital city or its surrounding suburbs	179	7.35	2.31
	Outside of a capital city	50	7.02	2.55
\$150,001+	A capital city or its surrounding suburbs	168	7.11	2.50
	Outside of a capital city	41	7.24	2.39

**Table 44 Home Integration means and standard deviations by Income and Education**

<i>Income</i>	<i>Education</i>	<i>N</i>	<i>Mean</i>	<i>Std. Deviation</i>
\$30,000 or less	High school or less	143	8.39	3.26
	TAFE / Community College	108	8.79	2.92
	University	72	8.26	3.04
\$30,001-\$60,000	High school or less	179	7.84	2.98
	TAFE / Community College	155	8.07	2.74
	University	95	8.02	2.66
\$60,001-\$90,000	High school or less	142	7.15	2.73
	TAFE / Community College	146	7.65	2.43
	University	162	7.91	2.47
\$90,001-\$120,000	High school or less	81	7.59	2.91
	TAFE / Community College	105	6.85	2.45
	University	147	7.56	2.51
\$120,001-\$150,000	High school or less	52	7.27	2.59
	TAFE / Community College	61	7.12	2.30
	University	116	7.36	2.31
\$150,001+	High school or less	35	6.33	2.90
	TAFE / Community College	43	7.39	2.17
	University	131	7.26	2.42

**Table 45 Home Integration means and standard deviations by Co-residency status and Area of residence**

<i>Co-residency status</i>	<i>Area of residence</i>	<i>N</i>	<i>Mean</i>	<i>Std. Deviation</i>
Live with other people	A capital city or its surrounding suburbs	1154	7.15	2.46
	Outside of a capital city	550	7.19	2.49
Live alone	A capital city or its surrounding suburbs	170	11.02	1.45
	Outside of a capital city	99	11.08	1.98



# SOCIAL INTEGRATION SUBSCALE





# SOCIAL INTEGRATION SUBSCALE

**Table 46** Social Integration mean, standard deviation and range

<i>Subscale</i>	<i>N</i>	<i>Minimum</i>	<i>Maximum</i>	<i>Mean</i>	<i>Std. Deviation</i>
Social Integration	1973	0	10	6.70	2.00

**Table 47** Social Integration means, standard deviations and range by Sex

<i>Sex</i>	<i>N</i>	<i>Minimum</i>	<i>Maximum</i>	<i>Mean</i>	<i>Std. Deviation</i>
Male	983	0	10	6.45	2.04
Female	990	0	10	6.95	1.93

**Table 48** Social Integration means, standard deviations and range by Age

<i>Age</i>	<i>N</i>	<i>Minimum</i>	<i>Maximum</i>	<i>Mean</i>	<i>Std. Deviation</i>
18-29 yrs	566	0	10	7.11	1.98
30-39 yrs	427	1	10	6.77	1.87
40-49 yrs	387	1	10	6.39	1.96
50-59 yrs	418	0	10	6.40	2.11
60-64 yrs	175	0	10	6.62	2.02

**Table 49** Social Integration means, standard deviations and range by Education

<i>Education</i>	<i>N</i>	<i>Minimum</i>	<i>Maximum</i>	<i>Mean</i>	<i>Std. Deviation</i>
High school or less	632	0	10	6.55	2.02
TAFE / Community College	618	1	10	6.49	2.05
University	723	1	10	7.01	1.91

**Table 50** Social Integration means, standard deviations and range by Income

<i>Income</i>	<i>N</i>	<i>Minimum</i>	<i>Maximum</i>	<i>Mean</i>	<i>Std. Deviation</i>
\$30,000 or less	323	0	10	6.15	2.23
\$30,001-\$60,000	429	1	10	6.40	1.99
\$60,001-\$90,000	450	1	10	6.79	1.86
\$90,001-\$120,000	333	1	10	6.90	1.92
\$120,001-\$150,000	229	1	10	7.07	1.90
\$150,001+	209	2	10	7.26	1.91

**Table 51 Social Integration means, standard deviations and range by Co-residency status**

<i>Co-residency status</i>	<i>N</i>	<i>Minimum</i>	<i>Maximum</i>	<i>Mean</i>	<i>Std. Deviation</i>
Live with other people	1704	0	10	6.77	1.94
Live alone	269	0	10	6.27	2.30

**Table 52 Social Integration means, standard deviations and range by Area of residence**

<i>Area of residence</i>	<i>N</i>	<i>Minimum</i>	<i>Maximum</i>	<i>Mean</i>	<i>Std. Deviation</i>
A capital city or its surrounding suburbs	1324	0	10	6.88	1.89
Outside of a capital city	649	0	10	6.34	2.18

**Table 53 Social Integration means and standard deviations by Age and Sex**

<i>Age</i>	<i>Sex</i>	<i>N</i>	<i>Mean</i>	<i>Std. Deviation</i>
18-29 yrs	Male	201	6.99	2.06
	Female	365	7.18	1.94
30-39 yrs	Male	211	6.49	1.92
	Female	216	7.03	1.78
40-49 yrs	Male	215	6.18	2.08
	Female	172	6.66	1.76
50-59 yrs	Male	256	6.22	2.07
	Female	162	6.69	2.14
60-64 yrs	Male	100	7.30	2.66
	Female	75	9.38	2.03

**Table 54 Social Integration means and standard deviations by Education and Sex**

<i>Education</i>	<i>Sex</i>	<i>N</i>	<i>Mean</i>	<i>Std. Deviation</i>
High school or less	Male	298	6.28	2.10
	Female	334	6.80	1.91
TAFE / Community College	Male	315	6.28	2.12
	Female	303	6.71	1.96
University	Male	370	6.74	1.89
	Female	353	7.29	1.90

**Table 55 Social Integration means and standard deviations by Income and Sex**

<i>Income</i>	<i>Sex</i>	<i>N</i>	<i>Mean</i>	<i>Std. Deviation</i>
\$30,000 or less	Male	122	5.60	2.34
	Female	201	6.48	2.10
\$30,001-\$60,000	Male	193	6.35	2.06
	Female	236	6.44	1.94
\$60,001-\$90,000	Male	238	6.40	1.94
	Female	212	7.22	1.66
\$90,001-\$120,000	Male	190	6.64	1.95
	Female	143	7.25	1.84
\$120,001-\$150,000	Male	124	6.71	1.92
	Female	105	7.49	1.79
\$150,001+	Male	116	7.04	1.86
	Female	93	7.53	1.95

**Table 56 Social Integration means and standard deviations by Co-residency status and Sex**

<i>Co-residency status</i>	<i>Sex</i>	<i>N</i>	<i>Mean</i>	<i>Std. Deviation</i>
Live with other people	Male	846	6.50	1.98
	Female	858	7.03	1.87
Live alone	Male	137	6.15	2.36
	Female	132	6.39	2.23

**Table 57 Social Integration means and standard deviations by Area of residence and Sex**

<i>Area of residence</i>	<i>Sex</i>	<i>N</i>	<i>Mean</i>	<i>Std. Deviation</i>
A capital city or its surrounding suburbs	Male	678	6.62	1.94
	Female	646	7.14	1.80
Outside of a capital city	Male	305	6.08	2.21
	Female	344	6.58	2.12

**Table 58 Social Integration means and standard deviations by Age and Education**

<b>Age</b>	<b>Education</b>	<b>N</b>	<b>Mean</b>	<b>Std. Deviation</b>
18-29 yrs	High school or less	190	6.95	1.97
	TAFE / Community College	130	6.92	2.13
	University	246	7.33	1.89
30-39 yrs	High school or less	98	6.67	1.94
	TAFE / Community College	132	6.48	1.80
	University	197	7.00	1.87
40-49 yrs	High school or less	122	6.26	1.94
	TAFE / Community College	133	6.18	1.96
	University	132	6.73	1.93
50-59 yrs	High school or less	151	6.17	2.11
	TAFE / Community College	169	6.42	2.21
	University	98	6.73	1.89
60-64 yrs	High school or less	71	6.65	1.99
	TAFE / Community College	54	6.46	2.05
	University	50	6.74	2.04

**Table 59 Social Integration means and standard deviations by Age and Income**

<i>Age</i>	<i>Income</i>	<i>N</i>	<i>Mean</i>	<i>Std. Deviation</i>
18-29 yrs	\$30,000 or less	112	6.92	2.08
	\$30,001-\$60,000	112	6.69	2.13
	\$60,001-\$90,000	143	7.21	1.81
	\$90,001-\$120,000	84	7.33	1.77
	\$120,001-\$150,000	62	7.26	2.16
	\$150,001+	53	7.58	1.87
30-39 yrs	\$30,000 or less	47	5.87	2.24
	\$30,001-\$60,000	94	6.49	1.56
	\$60,001-\$90,000	98	6.78	1.76
	\$90,001-\$120,000	84	7.01	1.89
	\$120,001-\$150,000	52	6.96	1.88
	\$150,001+	52	7.46	1.88
40-49 yrs	\$30,000 or less	52	5.52	2.30
	\$30,001-\$60,000	69	6.13	1.78
	\$60,001-\$90,000	87	6.43	1.78
	\$90,001-\$120,000	75	6.44	1.91
	\$120,001-\$150,000	48	7.06	1.88
	\$150,001+	56	6.84	1.93
50-59 yrs	\$30,000 or less	66	5.65	2.20
	\$30,001-\$60,000	98	6.09	2.27
	\$60,001-\$90,000	89	6.57	2.02
	\$90,001-\$120,000	69	6.58	2.02
	\$120,001-\$150,000	56	6.79	1.71
	\$150,001+	40	7.18	1.97
60-64 yrs	\$30,000 or less	46	5.98	2.11
	\$30,001-\$60,000	56	6.55	2.05
	\$60,001-\$90,000	33	6.55	1.80
	\$90,001-\$120,000	21	7.43	1.96
	\$120,001-\$150,000	11	7.91	1.22
	\$150,001+	8	7.13	1.89

**Table 60 Social Integration means and standard deviations by Age and Co-residency status**

<i>Age</i>	<i>Co-residency status</i>	<i>N</i>	<i>Mean</i>	<i>Std. Deviation</i>
18-29 yrs	Live with other people	508	7.19	1.93
	Live alone	58	6.41	2.32
30-39 yrs	Live with other people	382	6.76	1.85
	Live alone	45	6.80	2.10
40-49 yrs	Live with other people	336	6.49	1.89
	Live alone	51	5.76	2.27
50-59 yrs	Live with other people	340	6.51	2.06
	Live alone	78	5.92	2.24
60-64 yrs	Live with other people	138	6.57	1.88
	Live alone	37	6.81	2.49

**Table 61 Social Integration means and standard deviations by Age and Area of residence**

<i>Age</i>	<i>Area of residence</i>	<i>N</i>	<i>Mean</i>	<i>Std. Deviation</i>
18-29 yrs	A capital city or its surrounding suburbs	400	7.21	1.92
	Outside of a capital city	166	6.87	2.10
30-39 yrs	A capital city or its surrounding suburbs	312	6.92	1.85
	Outside of a capital city	115	6.35	1.86
40-49 yrs	A capital city or its surrounding suburbs	253	6.53	1.85
	Outside of a capital city	134	6.14	2.12
50-59 yrs	A capital city or its surrounding suburbs	265	6.68	1.93
	Outside of a capital city	153	5.92	2.31
60-64 yrs	A capital city or its surrounding suburbs	94	6.81	1.62
	Outside of a capital city	81	6.40	2.39

**Table 62 Social Integration means and standard deviations by Education and Area of residence**

<i>Education</i>	<i>Area of residence</i>	<i>N</i>	<i>Mean</i>	<i>Std. Deviation</i>
High School or Less	A capital city or its surrounding suburbs	392	6.82	1.85
	Outside of a capital city	240	6.12	2.19
TAFE / Community College	A capital city or its surrounding suburbs	376	6.57	1.95
	Outside of a capital city	242	6.37	2.20
University	A capital city or its surrounding suburbs	556	7.12	1.84
	Outside of a capital city	167	6.62	2.10

**Table 63 Social Integration means and standard deviations by Education and Co-residency status**

<i>Education</i>	<i>Co-residency status</i>	<i>N</i>	<i>Mean</i>	<i>Std. Deviation</i>
High school or less	Live with other people	535	6.65	1.90
	Live alone	97	6.01	2.50
TAFE / Community College	Live with other people	539	6.54	2.04
	Live alone	79	6.13	2.07
University	Live with other people	630	7.06	1.86
	Live alone	93	6.66	2.23

**Table 64 Social Integration means and standard deviations by Income and Co-residency status**

<i>Income</i>	<i>Co-residency status</i>	<i>N</i>	<i>Mean</i>	<i>Std. Deviation</i>
\$30,000 or less	Live with other people	237	6.41	2.13
	Live alone	86	5.43	2.35
\$30,001-\$60,000	Live with other people	348	6.36	1.97
	Live alone	81	6.57	2.12
\$60,001-\$90,000	Live with other people	397	6.84	1.81
	Live alone	53	6.43	2.19
\$90,001-\$120,000	Live with other people	310	6.91	1.92
	Live alone	23	6.83	2.06
\$120,001-\$150,000	Live with other people	215	7.06	1.87
	Live alone	14	7.14	2.41
\$150,001+	Live with other people	197	7.25	1.88
	Live alone	12	7.42	2.47

**Table 65 Social Integration means and standard deviations by Income and Area of residence**

<i>Income</i>	<i>Area of residence</i>	<i>N</i>	<i>Mean</i>	<i>Std. Deviation</i>
\$30,000 or less	A capital city or its surrounding suburbs	179	6.60	2.01
	Outside of a capital city	144	5.58	2.37
\$30,001-\$60,000	A capital city or its surrounding suburbs	249	6.48	1.89
	Outside of a capital city	180	6.29	2.12
\$60,001-\$90,000	A capital city or its surrounding suburbs	307	6.86	1.77
	Outside of a capital city	143	6.64	2.02
\$90,001-\$120,000	A capital city or its surrounding suburbs	242	7.02	1.83
	Outside of a capital city	91	6.59	2.13
\$120,001-\$150,000	A capital city or its surrounding suburbs	179	7.15	1.84
	Outside of a capital city	50	6.78	2.08
\$150,001+	A capital city or its surrounding suburbs	168	7.29	1.96
	Outside of a capital city	41	7.12	1.75

**Table 66 Social Integration means and standard deviations by Income and Education**

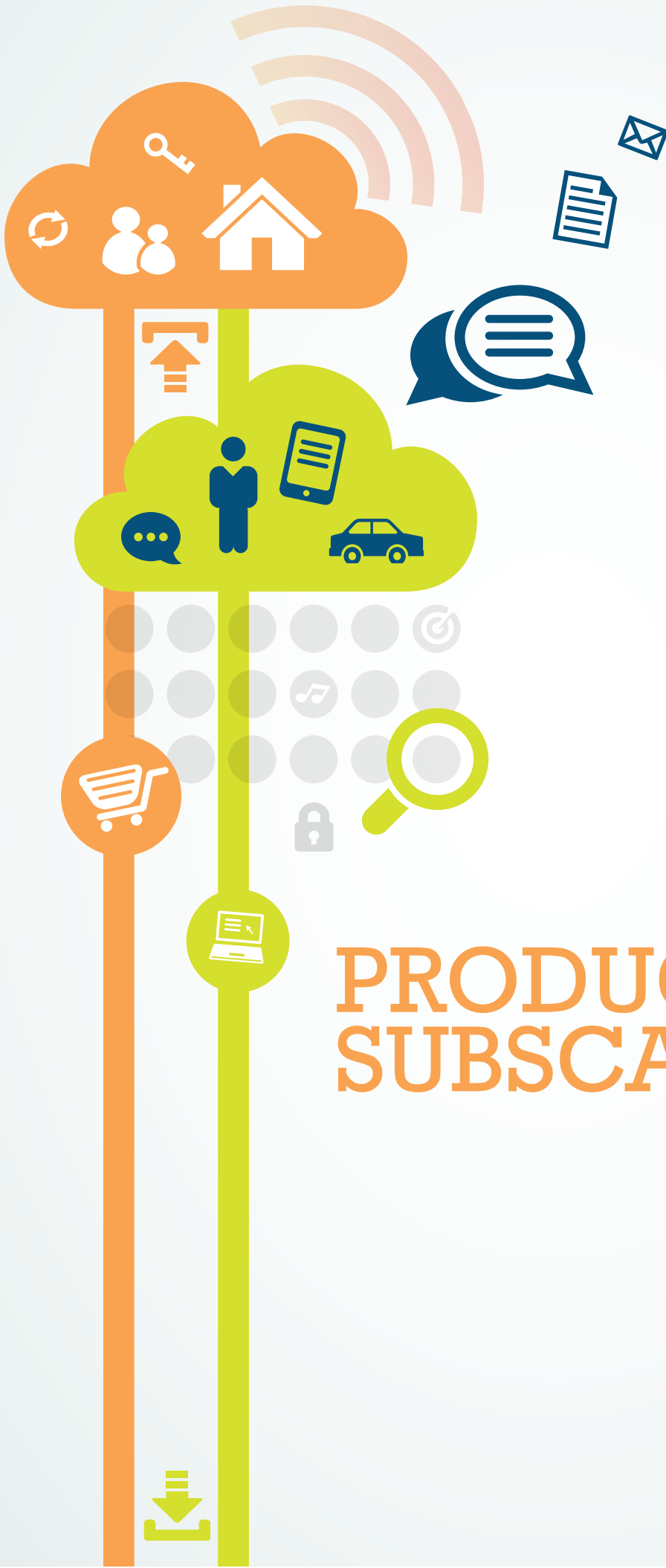
<i>Income</i>	<i>Education</i>	<i>N</i>	<i>Mean</i>	<i>Std. Deviation</i>
\$30,000 or less	High school or less	143	6.05	2.32
	TAFE / Community College	108	6.00	2.10
	University	72	6.57	2.22
\$30,001-\$60,000	High school or less	179	6.37	1.94
	TAFE / Community College	155	6.30	2.05
	University	95	6.62	2.00
\$60,001-\$90,000	High school or less	142	6.91	1.86
	TAFE / Community College	146	6.62	1.89
	University	162	6.83	1.83
\$90,001-\$120,000	High school or less	81	6.73	1.90
	TAFE / Community College	105	6.56	2.02
	University	147	7.24	1.82
\$120,001-\$150,000	High school or less	52	6.79	1.67
	TAFE / Community College	61	7.05	2.12
	University	116	7.20	1.88
\$150,001+	High school or less	35	7.34	1.86
	TAFE / Community College	43	7.00	2.18
	University	131	7.32	1.84



**Table 67 Social Integration means and standard deviations by Co-residency status and Area of residence**

<i>Co-residency status</i>	<i>Area of residence</i>	<i>N</i>	<i>Mean</i>	<i>Std. Deviation</i>
Live with other people	A capital city or its surrounding suburbs	1154	6.92	1.86
	Outside of a capital city	550	6.46	2.07
Live alone	A capital city or its surrounding suburbs	170	6.59	2.04
	Outside of a capital city	99	5.71	2.60





# PRODUCTIVITY SUBSCALE



# PRODUCTIVITY SUBSCALE

**Table 68** Productivity mean, standard deviation and range

<i>Subscale</i>	<i>N</i>	<i>Minimum</i>	<i>Maximum</i>	<i>Mean</i>	<i>Std. Deviation</i>
Productivity	1973	0	7	4.73	1.77

**Table 69** Productivity means, standard deviations and range by Sex

<i>Sex</i>	<i>N</i>	<i>Minimum</i>	<i>Maximum</i>	<i>Mean</i>	<i>Std. Deviation</i>
Male	983	0	7	4.94	1.69
Female	990	0	7	4.52	1.83

**Table 70** Productivity means, standard deviations and range by Age

<i>Age</i>	<i>N</i>	<i>Minimum</i>	<i>Maximum</i>	<i>Mean</i>	<i>Std. Deviation</i>
18-29 yrs	566	0	7	5.13	1.57
30-39 yrs	427	0	7	4.96	1.60
40-49 yrs	387	0	7	4.84	1.68
50-59 yrs	418	0	7	4.40	1.92
60-64 yrs	175	0	7	3.45	1.93

**Table 71** Productivity means, standard deviations and range by Education

<i>Education</i>	<i>N</i>	<i>Minimum</i>	<i>Maximum</i>	<i>Mean</i>	<i>Std. Deviation</i>
High school or less	632	0	7	4.42	1.94
TAFE / Community College	618	0	7	4.53	1.85
University	618	0	7	4.53	1.85

**Table 72** Productivity means, standard deviations and range by Income

<i>Income</i>	<i>N</i>	<i>Minimum</i>	<i>Maximum</i>	<i>Mean</i>	<i>Std. Deviation</i>
\$30,000 or less	323	0	7	3.60	2.10
\$30,001-\$60,000	429	0	7	4.29	1.85
\$60,001-\$90,000	450	0	7	4.89	1.64
\$90,001-\$120,000	333	0	7	5.32	1.35
\$120,001-\$150,000	229	1	7	5.33	1.20
\$150,001+	209	0	7	5.43	1.33

**Table 73 Productivity means, standard deviations and range by Co-residency status**

<i>Co-residency status</i>	<i>N</i>	<i>Minimum</i>	<i>Maximum</i>	<i>Mean</i>	<i>Std. Deviation</i>
Live with other people	1704	0	7	4.76	1.74
Live alone	269	0	7	4.54	1.96

**Table 74 Productivity means, standard deviations and range partitioned by Area of residence**

<i>Area of residence</i>	<i>N</i>	<i>Minimum</i>	<i>Maximum</i>	<i>Mean</i>	<i>Std. Deviation</i>
A capital city or its surrounding suburbs	1324	0	7	4.94	1.65
Outside of a capital city	649	0	7	4.30	1.94

**Table 75 Productivity means and standard deviations by Age and Sex**

<i>Age</i>	<i>Sex</i>	<i>N</i>	<i>Mean</i>	<i>Std. Deviation</i>
18-29 yrs	Male	201	5.52	1.15
	Female	365	4.91	1.72
30-39 yrs	Male	211	5.26	1.40
	Female	216	4.66	1.73
40-49 yrs	Male	215	5.10	1.59
	Female	172	4.51	1.75
50-59 yrs	Male	256	4.64	1.88
	Female	162	4.01	1.93
60-64 yrs	Male	100	3.54	1.98
	Female	75	3.32	1.88

**Table 76 Productivity means and standard deviations by Education and Sex**

<i>Education</i>	<i>Sex</i>	<i>N</i>	<i>Mean</i>	<i>Std. Deviation</i>
High school or less	Male	298	4.69	1.85
	Female	334	4.18	1.98
TAFE / Community College	Male	315	4.71	1.84
	Female	303	4.34	1.85
University	Male	370	5.34	1.31
	Female	353	4.98	1.54

**Table 77 Productivity means and standard deviations by Income and Sex**

<i>Income</i>	<i>Sex</i>	<i>N</i>	<i>Mean</i>	<i>Std. Deviation</i>
\$30,000 or less	Male	122	3.60	2.16
	Female	201	3.60	2.07
\$30,001-\$60,000	Male	193	4.42	1.84
	Female	236	4.18	1.86
\$60,001-\$90,000	Male	238	5.20	1.45
	Female	212	4.54	1.76
\$90,001-\$120,000	Male	190	5.29	1.40
	Female	143	5.36	1.29
\$120,001-\$150,000	Male	124	5.50	1.13
	Female	105	5.13	1.26
\$150,001+	Male	116	5.53	1.24
	Female	93	5.30	1.43

**Table 78 Productivity means and standard deviations by Co-Residency status and Sex**

<i>Co-residency status</i>	<i>Sex</i>	<i>N</i>	<i>Mean</i>	<i>Std. Deviation</i>
Live with other people	Male	846	5.02	1.60
	Female	858	4.50	1.83
Live alone	Male	137	4.45	2.10
	Female	132	4.63	1.81

**Table 79 Productivity means and standard deviations by Area of residence and Sex**

<i>Area of residence</i>	<i>Sex</i>	<i>N</i>	<i>Mean</i>	<i>Std. Deviation</i>
A capital city or its surrounding suburbs	Male	678	5.17	1.50
	Female	646	4.70	1.76
Outside of a capital city	Male	305	4.45	1.97
	Female	344	4.17	1.91

**Table 80 Productivity means and standard deviations by Age and Education**

<b>Age</b>	<b>Education</b>	<b>N</b>	<b>Mean</b>	<b>Std. Deviation</b>
18-29 yrs	High school or less	190	5.15	1.68
	TAFE / Community College	130	4.78	1.74
	University	246	5.29	1.34
30-39 yrs	High school or less	98	4.43	1.90
	TAFE / Community College	132	4.70	1.72
	University	197	5.39	1.20
40-49 yrs	High school or less	122	4.39	1.94
	TAFE / Community College	133	4.83	1.68
	University	132	5.25	1.30
50-59 yrs	High school or less	151	4.05	1.98
	TAFE / Community College	169	4.34	1.94
	University	98	5.02	1.63
60-64 yrs	High school or less	71	3.28	1.81
	TAFE / Community College	54	3.35	2.08
	University	50	3.78	1.93



**Table 81** Productivity means and standard deviations by Age and Income

<i>Age</i>	<i>Income</i>	<i>N</i>	<i>Mean</i>	<i>Std. Deviation</i>
18-29 yrs	\$30,000 or less	112	4.65	1.93
	\$30,001-\$60,000	112	4.90	1.57
	\$60,001-\$90,000	143	5.11	1.60
	\$90,001-\$120,000	84	5.58	1.18
	\$120,001-\$150,000	62	5.47	0.95
	\$150,001+	53	5.51	1.40
30-39 yrs	\$30,000 or less	47	3.60	1.96
	\$30,001-\$60,000	94	4.59	1.70
	\$60,001-\$90,000	98	4.88	1.56
	\$90,001-\$120,000	84	5.46	1.13
	\$120,001-\$150,000	52	5.42	1.14
	\$150,001+	52	5.71	1.19
40-49 yrs	\$30,000 or less	52	3.29	2.22
	\$30,001-\$60,000	69	4.38	1.77
	\$60,001-\$90,000	87	5.02	1.40
	\$90,001-\$120,000	75	5.41	1.16
	\$120,001-\$150,000	48	5.42	1.18
	\$150,001+	56	5.29	1.37
50-59 yrs	\$30,000 or less	66	2.73	1.78
	\$30,001-\$60,000	98	3.96	2.00
	\$60,001-\$90,000	89	4.75	1.80
	\$90,001-\$120,000	69	4.91	1.70
	\$120,001-\$150,000	56	5.18	1.40
	\$150,001+	40	5.45	1.01
60-64 yrs	\$30,000 or less	46	2.65	1.83
	\$30,001-\$60,000	56	3.02	1.80
	\$60,001-\$90,000	33	4.00	1.89
	\$90,001-\$120,000	21	4.67	1.71
	\$120,001-\$150,000	11	4.55	1.51
	\$150,001+	8	4.00	2.00

**Table 82** Productivity means and standard deviations by Age and Co-residency status

<i>Age</i>	<i>Co-residency status</i>	<i>N</i>	<i>Mean</i>	<i>Std. Deviation</i>
18-29 yrs	Live with other people	508	5.11	1.58
	Live alone	58	5.26	1.42
30-39 yrs	Live with other people	382	4.91	1.61
	Live alone	45	5.33	1.51
40-49 yrs	Live with other people	336	4.84	1.65
	Live alone	51	4.82	1.94
50-59 yrs	Live with other people	340	4.50	1.87
	Live alone	78	3.96	2.07
60-64 yrs	Live with other people	138	3.49	1.90
	Live alone	37	3.27	2.05

**Table 83** Productivity means and standard deviations by Age and Area of residence

<i>Age</i>	<i>Area of residence</i>	<i>N</i>	<i>Mean</i>	<i>Std. Deviation</i>
18-29 yrs	A capital city or its surrounding suburbs	400	5.30	1.40
	Outside of a capital city	166	4.70	1.85
30-39 yrs	A capital city or its surrounding suburbs	312	5.07	1.52
	Outside of a capital city	115	4.65	1.78
40-49 yrs	A capital city or its surrounding suburbs	253	4.96	1.56
	Outside of a capital city	134	4.60	1.88
50-59 yrs	A capital city or its surrounding suburbs	265	4.65	1.85
	Outside of a capital city	153	3.95	1.95
60-64 yrs	A capital city or its surrounding suburbs	94	3.71	1.93
	Outside of a capital city	81	3.14	1.90

**Table 84** Productivity means and standard deviations by Education and Area of residence

<i>Education</i>	<i>Area of residence</i>	<i>N</i>	<i>Mean</i>	<i>Std. Deviation</i>
High school or less	A capital city or its surrounding suburbs	392	4.69	1.80
	Outside of a capital city	240	3.98	2.07
TAFE / Community College	A capital city or its surrounding suburbs	376	4.65	1.80
	Outside of a capital city	242	4.34	1.91
University	A capital city or its surrounding suburbs	556	5.31	1.32
	Outside of a capital city	167	4.71	1.72

**Table 85 Productivity means and standard deviations by Education and Co-residency status**

<i>Education</i>	<i>Co-residency status</i>	<i>N</i>	<i>Mean</i>	<i>Std. Deviation</i>
High school or less	Live with other people	535	4.48	1.92
	Live alone	97	4.07	2.03
TAFE / Community College	Live with other people	539	4.56	1.82
	Live alone	79	4.33	2.04
University	Live with other people	630	5.16	1.41
	Live alone	93	5.20	1.63

**Table 86 Productivity means and standard deviations by Income and Co-residency status**

<i>Income</i>	<i>Co-residency status</i>	<i>N</i>	<i>Mean</i>	<i>Std. Deviation</i>
\$30,000 or less	Live with other people	237	3.77	2.10
	Live alone	86	3.14	2.02
\$30,001-\$60,000	Live with other people	348	4.15	1.85
	Live alone	81	4.86	1.78
\$60,001-\$90,000	Live with other people	397	4.83	1.66
	Live alone	53	5.34	1.36
\$90,001-\$120,000	Live with other people	310	5.27	1.38
	Live alone	23	5.96	0.47
\$120,001-\$150,000	Live with other people	215	5.32	1.22
	Live alone	14	5.57	0.76
\$150,001+	Live with other people	197	5.46	1.27
	Live alone	12	4.92	2.07

**Table 87** Productivity means and standard deviations by Income and Area of residence

<i>Income</i>	<i>Area of residence</i>	<i>N</i>	<i>Mean</i>	<i>Std. Deviation</i>
\$30,000 or less	A capital city or its surrounding suburbs	179	3.84	2.12
	Outside of a capital city	144	3.30	2.04
\$30,001-\$60,000	A capital city or its surrounding suburbs	249	4.53	1.74
	Outside of a capital city	180	3.95	1.96
\$60,001-\$90,000	A capital city or its surrounding suburbs	307	4.99	1.59
	Outside of a capital city	143	4.68	1.73
\$90,001-\$120,000	A capital city or its surrounding suburbs	242	5.39	1.22
	Outside of a capital city	91	5.12	1.64
\$120,001-\$150,000	A capital city or its surrounding suburbs	179	5.44	1.11
	Outside of a capital city	50	4.94	1.43
\$150,001+	A capital city or its surrounding suburbs	168	5.43	1.32
	Outside of a capital city	41	5.44	1.36

**Table 88** Productivity means and standard deviations by Income and Education

<i>Income</i>	<i>Education</i>	<i>N</i>	<i>Mean</i>	<i>Std. Deviation</i>
\$30,000 or less	High school or less	143	3.42	2.14
	TAFE / Community College	108	3.36	1.99
	University	72	4.32	2.03
\$30,001-\$60,000	High school or less	179	4.08	1.96
	TAFE / Community College	155	4.29	1.88
	University	95	4.66	1.55
\$60,001-\$90,000	High school or less	142	4.87	1.68
	TAFE / Community College	146	4.66	1.76
	University	162	5.11	1.46
\$90,001-\$120,000	High school or less	81	5.22	1.46
	TAFE / Community College	105	5.07	1.57
	University	147	5.55	1.06
\$120,001-\$150,000	High school or less	52	5.15	1.38
	TAFE / Community College	61	5.26	1.24
	University	116	5.45	1.09
\$150,001+	High school or less	35	5.46	1.31
	TAFE / Community College	43	5.53	1.40
	University	131	5.39	1.32

**Table 89** Productivity means and standard deviations by Co-residency status and Area of residence

<i>Co-residency status</i>	<i>Area of residence</i>	<i>N</i>	<i>Mean</i>	<i>Std. Deviation</i>
Live with other people	A capital city or its surrounding suburbs	1154	4.98	1.59
	Outside of a capital city	550	4.29	1.94
Live alone	A capital city or its surrounding suburbs	170	4.63	1.95
	Outside of a capital city	99	4.38	1.99





# ELECTRONIC SOCIAL NETWORKING SUBSCALE





# ELECTRONIC SOCIAL NETWORKING SUBSCALE

**Table 90** ESN mean, standard deviation and range

<i>Subscale</i>	<i>N</i>	<i>Minimum</i>	<i>Maximum</i>	<i>Mean</i>	<i>Std. Deviation</i>
Technology-enabled integration score	1973	0	6	3.21	1.57

**Table 91** ESN means, standard deviations and range by Sex

<i>Sex</i>	<i>N</i>	<i>Minimum</i>	<i>Maximum</i>	<i>Mean</i>	<i>Std. Deviation</i>
Male	983	0	6	2.99	1.66
Female	990	0	6	3.43	1.45

**Table 92** ESN means, standard deviations and range by Age

<i>Age</i>	<i>N</i>	<i>Minimum</i>	<i>Maximum</i>	<i>Mean</i>	<i>Std. Deviation</i>
18-29 yrs	566	0	6	3.79	1.43
30-39 yrs	427	0	6	3.42	1.50
40-49 yrs	387	0	6	2.90	1.48
50-59 yrs	418	0	6	2.73	1.64
60-64 yrs	175	0	6	2.68	1.54

**Table 93** ESN means, standard deviations and range by Education

<i>Education</i>	<i>N</i>	<i>Minimum</i>	<i>Maximum</i>	<i>Mean</i>	<i>Std. Deviation</i>
High school or less	632	0	6	2.93	1.55
TAFE / Community College	618	0	6	3.00	1.53
University	618	0	7	4.53	1.85

**Table 94 ESN means, standard deviations and range by Income**

<i>Income</i>	<i>N</i>	<i>Minimum</i>	<i>Maximum</i>	<i>Mean</i>	<i>Std. Deviation</i>
\$30,000 or less	323	0	6	3.06	1.61
\$30,001-\$60,000	429	0	6	2.96	1.57
\$60,001-\$90,000	450	0	6	3.23	1.57
\$90,001-\$120,000	333	0	6	3.32	1.56
\$120,001-\$150,000	229	0	6	3.36	1.49
\$150,001+	209	0	6	3.61	1.52

**Table 95 ESN means, standard deviations and range by Co-residency status**

<i>Co-residency status</i>	<i>N</i>	<i>Minimum</i>	<i>Maximum</i>	<i>Mean</i>	<i>Std. Deviation</i>
Live with other people	1704	0	6	3.23	1.56
Live alone	269	0	6	3.10	1.63

**Table 96 ESN means, standard deviations and range by Area of residence**

<i>Area of residence</i>	<i>N</i>	<i>Minimum</i>	<i>Maximum</i>	<i>Mean</i>	<i>Std. Deviation</i>
A capital city or its surrounding suburbs	1324	0	6	3.35	1.55
Outside of a capital city	649	0	6	2.93	1.57

**Table 97 ESN means and standard deviations by Age and Sex**

<i>Age</i>	<i>Sex</i>	<i>N</i>	<i>Mean</i>	<i>Std. Deviation</i>
18-29 yrs	Male	201	3.81	1.52
	Female	365	3.77	1.38
30-39 yrs	Male	211	3.31	1.67
	Female	216	3.52	1.31
40-49 yrs	Male	215	2.75	1.53
	Female	172	3.08	1.39
50-59 yrs	Male	256	2.56	1.62
	Female	162	3.01	1.65
60-64 yrs	Male	100	2.33	1.51
	Female	75	3.15	1.45

**Table 98 ESN means and standard deviations by Education and Sex**

<i>Education</i>	<i>Sex</i>	<i>N</i>	<i>Mean</i>	<i>Std. Deviation</i>
High school or less	Male	298	2.69	1.61
	Female	334	3.15	1.47
TAFE / Community College	Male	315	2.72	1.60
	Female	303	3.29	1.40
University	Male	370	3.48	1.64
	Female	353	3.81	1.40

**Table 99 ESN means and standard deviations by Income and Sex**

<i>Income</i>	<i>Sex</i>	<i>N</i>	<i>Mean</i>	<i>Std. Deviation</i>
\$30,000 or less	Male	122	2.66	1.77
	Female	201	3.29	1.46
\$30,001-\$60,000	Male	193	2.80	1.59
	Female	236	3.08	1.54
\$60,001-\$90,000	Male	238	2.91	1.71
	Female	212	3.58	1.33
\$90,001-\$120,000	Male	190	3.12	1.66
	Female	143	3.58	1.38
\$120,001-\$150,000	Male	124	3.10	1.50
	Female	105	3.66	1.43
\$150,001+	Male	116	3.52	1.59
	Female	93	3.72	1.42

**Table 100 ESN means and standard deviations by Co-residency status and Sex**

<i>Co-residency status</i>	<i>Sex</i>	<i>N</i>	<i>Mean</i>	<i>Std. Deviation</i>
Live with other people	Male	846	3.00	1.65
	Female	858	3.45	1.44
Live alone	Male	137	2.96	1.73
	Female	132	3.25	1.52

**Table 101 ESN means and standard deviations by Area of residence and Sex**

<i>Area of residence</i>	<i>Sex</i>	<i>N</i>	<i>Mean</i>	<i>Std. Deviation</i>
A capital city or its surrounding suburbs	Male	678	3.17	1.65
	Female	646	3.54	1.42
Outside of a capital city	Male	305	2.62	1.61
	Female	344	3.21	1.49

**Table 102 ESN means and standard deviations by Age and Education**

<b>Age</b>	<b>Education</b>	<b>N</b>	<b>Mean</b>	<b>Std. Deviation</b>
18-29 yrs	High school or less	190	3.52	1.36
	TAFE / Community College	130	3.72	1.45
	University	246	4.02	1.43
30-39 yrs	High school or less	98	3.07	1.51
	TAFE / Community College	132	3.14	1.47
	University	197	3.78	1.44
40-49 yrs	High school or less	122	2.47	1.51
	TAFE / Community College	133	2.79	1.34
	University	132	3.41	1.43
50-59 yrs	High school or less	151	2.52	1.62
	TAFE / Community College	169	2.68	1.56
	University	98	3.14	1.75
60-64 yrs	High school or less	71	2.82	1.50
	TAFE / Community College	54	2.41	1.57
	University	50	2.78	1.54

**Table 103 ESN means and standard deviations by Age and Income**

<i>Age</i>	<i>Income</i>	<i>N</i>	<i>Mean</i>	<i>Std. Deviation</i>
18-29 yrs	\$30,000 or less	112	3.75	1.49
	\$30,001-\$60,000	112	3.56	1.50
	\$60,001-\$90,000	143	3.83	1.37
	\$90,001-\$120,000	84	4.05	1.33
	\$120,001-\$150,000	62	3.63	1.43
	\$150,001+	53	3.98	1.39
30-39 yrs	\$30,000 or less	47	2.94	1.55
	\$30,001-\$60,000	94	3.23	1.51
	\$60,001-\$90,000	98	3.47	1.44
	\$90,001-\$120,000	84	3.62	1.56
	\$120,001-\$150,000	52	3.35	1.34
	\$150,001+	52	3.83	1.50
40-49 yrs	\$30,000 or less	52	2.33	1.45
	\$30,001-\$60,000	69	2.74	1.38
	\$60,001-\$90,000	87	2.72	1.40
	\$90,001-\$120,000	75	2.87	1.37
	\$120,001-\$150,000	48	3.54	1.54
	\$150,001+	56	3.39	1.53
50-59 yrs	\$30,000 or less	66	2.88	1.61
	\$30,001-\$60,000	98	2.40	1.56
	\$60,001-\$90,000	89	2.72	1.77
	\$90,001-\$120,000	69	2.61	1.55
	\$120,001-\$150,000	56	3.00	1.65
	\$150,001+	40	3.18	1.66
60-64 yrs	\$30,000 or less	46	2.57	1.56
	\$30,001-\$60,000	56	2.52	1.58
	\$60,001-\$90,000	33	2.58	1.58
	\$90,001-\$120,000	21	3.14	1.65
	\$120,001-\$150,000	11	2.91	1.14
	\$150,001+	8	3.38	0.74

**Table 104 ESN means and standard deviations by Age and Co-residency status**

<i>Age</i>	<i>Co-residency status</i>	<i>N</i>	<i>Mean</i>	<i>Std. Deviation</i>
18-29 yrs	Live with other people	508	3.78	1.42
	Live alone	58	3.81	1.49
30-39 yrs	Live with other people	382	3.47	1.48
	Live alone	45	3.00	1.61
40-49 yrs	Live with other people	336	2.92	1.50
	Live alone	51	2.75	1.32
50-59 yrs	Live with other people	340	2.72	1.62
	Live alone	78	2.78	1.77
60-64 yrs	Live with other people	138	2.52	1.46
	Live alone	37	3.27	1.68

**Table 105 ESN means and standard deviations by Age and Area of residence**

<i>Age</i>	<i>Area of residence</i>	<i>N</i>	<i>Mean</i>	<i>Std. Deviation</i>
18-29 yrs	A capital city or its surrounding suburbs	400	3.85	1.47
	Outside of a capital city	166	3.64	1.31
30-39 yrs	A capital city or its surrounding suburbs	312	3.50	1.50
	Outside of a capital city	115	3.18	1.48
40-49 yrs	A capital city or its surrounding suburbs	253	3.11	1.42
	Outside of a capital city	134	2.50	1.51
50-59 yrs	A capital city or its surrounding suburbs	265	2.88	1.63
	Outside of a capital city	153	2.47	1.64
60-64 yrs	A capital city or its surrounding suburbs	94	2.67	1.48
	Outside of a capital city	81	2.69	1.60

**Table 106 ESN means and standard deviations by Education and Area of residence**

<i>Education</i>	<i>Area of residence</i>	<i>N</i>	<i>Mean</i>	<i>Std. Deviation</i>
High school or less	A capital city or its surrounding suburbs	392	3.09	1.53
	Outside of a capital city	240	2.68	1.56
TAFE / Community College	A capital city or its surrounding suburbs	376	3.04	1.53
	Outside of a capital city	242	2.93	1.53
University	A capital city or its surrounding suburbs	556	3.74	1.51
	Outside of a capital city	167	3.30	1.59

**Table 107 ESN means and standard deviations by Education and Co-residency status**

<i>Education</i>	<i>Co-residency status</i>	<i>N</i>	<i>Mean</i>	<i>Std. Deviation</i>
High school or less	Live with other people	535	2.95	1.57
	Live alone	97	2.82	1.45
TAFE / Community College	Live with other people	539	3.01	1.51
	Live alone	79	2.92	1.65
University	Live with other people	630	3.65	1.51
	Live alone	93	3.54	1.72

**Table 108 ESN means and standard deviations by Income and Co-residency status**

<i>Income</i>	<i>Co-residency status</i>	<i>N</i>	<i>Mean</i>	<i>Std. Deviation</i>
\$30,000 or less	Live with other people	237	3.19	1.62
	Live alone	86	2.69	1.54
\$30,001-\$60,000	Live with other people	348	2.92	1.58
	Live alone	81	3.10	1.55
\$60,001-\$90,000	Live with other people	397	3.22	1.55
	Live alone	53	3.28	1.77
\$90,001-\$120,000	Live with other people	310	3.31	1.55
	Live alone	23	3.48	1.70
\$120,001-\$150,000	Live with other people	215	3.31	1.48
	Live alone	14	4.07	1.54
\$150,001+	Live with other people	197	3.62	1.51
	Live alone	12	3.42	1.68

**Table 109 ESN means and standard deviations by Income and Area of residence**

<i>Income</i>	<i>Area of residence</i>	<i>N</i>	<i>Mean</i>	<i>Std. Deviation</i>
\$30,000 or less	A capital city or its surrounding suburbs	179	3.26	1.61
	Outside of a capital city	144	2.80	1.58
\$30,001-\$60,000	A capital city or its surrounding suburbs	249	3.06	1.57
	Outside of a capital city	180	2.81	1.57
\$60,001-\$90,000	A capital city or its surrounding suburbs	307	3.31	1.57
	Outside of a capital city	143	3.04	1.56
\$90,001-\$120,000	A capital city or its surrounding suburbs	242	3.49	1.54
	Outside of a capital city	91	2.86	1.52
\$120,001-\$150,000	A capital city or its surrounding suburbs	179	3.41	1.42
	Outside of a capital city	50	3.18	1.73
\$150,001+	A capital city or its surrounding suburbs	168	3.67	1.53
	Outside of a capital city	41	3.37	1.44



**Table 110 ESN means and standard deviations by Income and Education**

<i>Income</i>	<i>Education</i>	<i>N</i>	<i>Mean</i>	<i>Std. Deviation</i>
\$30,000 or less	High school or less	143	3.08	1.58
	TAFE / Community College	108	2.76	1.57
	University	72	3.46	1.68
\$30,001-\$60,000	High school or less	179	2.64	1.51
	TAFE / Community College	155	2.90	1.54
	University	95	3.63	1.54
\$60,001-\$90,000	High school or less	142	2.93	1.52
	TAFE / Community College	146	3.15	1.56
	University	162	3.56	1.58
\$90,001-\$120,000	High school or less	81	3.02	1.67
	TAFE / Community College	105	3.04	1.46
	University	147	3.68	1.50
\$120,001-\$150,000	High school or less	52	2.94	1.55
	TAFE / Community College	61	3.18	1.51
	University	116	3.64	1.40
\$150,001+	High school or less	35	3.57	1.27
	TAFE / Community College	43	3.05	1.46
	University	131	3.80	1.56

**Table 111 ESN means and standard deviations by Co-residency status and Area of residence**

<i>Co-residency status</i>	<i>Area of residence</i>	<i>N</i>	<i>Mean</i>	<i>Std. Deviation</i>
Live with other people	A capital city or its surrounding suburbs	1154	3.36	1.55
	Outside of a capital city	550	2.96	1.56
Live alone	A capital city or its surrounding suburbs	170	3.29	1.59
	Outside of a capital city	99	2.77	1.66





# REFERENCES/ APPENDIX



# REFERENCES

- Dalemans, R. J., de Witte, L. P., Beurskens, A. J., van den Heuvel, W. J., & Wade, D. T. (2010). An investigation into the social participation of stroke survivors with aphasia. *Disability and Rehabilitation*, 32(20), 1678-1685.
- Esselman, P. C., Ptacek, J. T., Kowalske, K., Cromes, G. F., deLateur, B. J., & Engrav, L. H. (2001). Community integration after burn injuries. *Journal of Burn Care Rehabilitation*, 22(3), 221-227.
- Gontkovsky, S. T., Russum, P. & Stokic, D. S. (2009). Comparison of the CIQ and CHART Short Form in assessing community integration in individuals with chronic spinal cord injury: a pilot study. *NeuroRehabilitation*, 24(2), 185-192.
- Hallgren, M., Nygard, L. & Kottorp, A. (2011). Technology and everyday functioning in people with intellectual disabilities: a Rasch analysis of the Everyday Technology Use Questionnaire (ETUQ). *Journal of Intellectual Disability Research*, 55(6), 610-620.
- Hirsh, A. T., Braden, A. L., Craggs, J. G. & Jensen, M. P. (2011). Psychometric properties of the Community Integration Questionnaire in a heterogeneous sample of adults with physical disability. *Archives of Physical Medicine and Rehabilitation*, 92(10), 1602-1610.
- Kaplan, C. P. (2000). Community Integration Questionnaire for patients with brain tumor: A comparative study. *American Journal of Physical Medicine and Rehabilitation*, 79(3), 243-246.
- Kaplan, C. P. (2001). The community integration questionnaire with new scoring guidelines: concurrent validity and need for appropriate norms. *Brain Injury*, 15(8), 725-731.
- Ritchie, L., Wright-St Clair, V. A., Keogh, J. & Gray, M. (2014). Community integration after traumatic brain injury: A systematic review of the clinical implications of measurement and service provision for older adults. *Archives of Physical Medicine and Rehabilitation*, 95(1), 163-174.
- Rosenberg, L., Nygard, L. & Kottorp, A. (2009). Everyday Technology Use Questionnaire: Psychometric evaluation of a new assessment of competence in technology use. *Occupational Therapy Journal of Rehabilitation*, 29(2), 52-62.
- Sander, A. M., Fuchs, K. L., High Jr, W. M., Hall, K. M., Kreutzer, J. S. & Rosenthal, M. (1999). The Community Integration Questionnaire revisited: An assessment of factor structure and validity. *Archives of Physical Medicine and Rehabilitation*, 80(10), 1303-1308.
- Sloan, S. (2008). *Acquired Brain Injury Slow to Recover Program. Report of the therapy review program.* Melbourne, Australia: Osborn Sloan & Associates Pty Ltd.
- Transport Accident Commission (2014). *The Community Integrated Questionnaire*. Retrieved August 2014, from [http://www.tac.vic.gov.au/\\_data/assets/pdf\\_file/0003/71382/CommunityIntegrationQuestionnaire\\_v1.0.pdf](http://www.tac.vic.gov.au/_data/assets/pdf_file/0003/71382/CommunityIntegrationQuestionnaire_v1.0.pdf).
- Willer, B. & Corrigan, J. D. (1994). Whatever It Takes: A model for community-based services. *Brain Injury*, 8(7), 647-659.
- Willer, B., Ottenbacher, K. J. & Coad, M. L. (1994). The Community Integration Questionnaire: A comparative examination. *American Journal of Physical Medicine*, 73(2), 103-111.
- Willer, B., Rosenthal, M., Kreutzer, J. S., Gordan, W. A. & Rempel, R. (1993). Assessment of community integration following rehabilitation for traumatic brain injury, *Journal of Head Trauma Rehabilitation*, 6(2), 75-87.
- Willis, B. & Lessler, J. (1999). Question Appraisal System QAS-99. Retrieved January 2014, from <http://www.appliedresearch.cancer.gov/areas/cognitive/QAS99>.
- Winkler, D., Holgate, N., Sloan, S. & Callaway, L. (2012). *Evaluation of quality of life outcomes of the Younger People in Residential Aged Care Initiative in Victoria*. Melbourne, Australia: Summer Foundation Ltd.
- Winkler, D., Sloan, S. and Callaway, L. (2007). *Younger people in residential aged care: Support needs, preferences and future direction*. Melbourne, Australia: Summer Foundation Ltd.

# APPENDIX

**Table 1A. Demographic characteristics of the normative sample (N = 1973).**

	<b>N</b>	<b>%</b>
<b>Gender</b>		
Male	983	49.8
Female	990	50.2
<b>Age</b>		
18-29 yrs	566	28.7
30-39 yrs	427	21.6
40-49 yrs	387	19.6
50-59 yrs	418	21.2
60-64 yrs	175	8.9
<b>Area of residence</b>		
A capital city or its surrounding suburbs	1324	67.1
Outside of a capital city	649	32.9
<b>Education</b>		
High school or less	632	32.0
TAFE / Community college	618	31.3
University	723	36.6
<b>Income</b>		
\$30,000 or less	323	16.4
\$30,001-\$60,000	429	21.7
\$60,001-\$90,000	450	22.8
\$90,001-\$120,000	333	16.9
\$120,001-\$150,000	229	11.6
\$150,000+	209	10.6
<b>Co-residency status</b>		
Live with other people	1704	86.4
Live alone	269	13.6
<b>Internet access*</b>		
Home broadband connection	1809	91.7
Internet-enabled smartphone or tablet	1132	57.4
Internet in the local community	413	20.9
Other types of Internet access	108	5.5

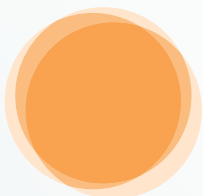
\*Multiple response question. All participants reported having access to the Internet.

UNWEIGHTED NORMATIVE DATA CIO-R ITEM MEAN SCORES (N=1973)

	Q1		Q2		Q3		Q4		Q5		Q6		Q7		Q8		Q9		Q10		Q11		Q12		Q13-15		Q16		Q17		Q18			
	M	SD	M	SD	M	SD	M	SD	M	SD	M	SD	M	SD	M	SD	M	SD	M	SD	M	SD	M	SD	M	SD	M	SD	M	SD	M	SD		
<b>All (unweighted)</b>	1.36	0.60	1.28	0.67	1.24	0.66	1.23	0.53	1.13	0.59	1.45	0.66	1.60	0.52	1.16	0.57	1.24	0.54	1.32	0.74	1.38	0.93	1.70	0.55	3.03	1.54	1.27	0.79	0.47	0.70	1.47	0.69		
<b>Sex</b>																																		
Male	1.25	0.60	1.11	0.68	1.05	0.65	1.11	0.51	1.04	0.59	1.44	0.66	1.55	0.54	1.21	0.58	1.20	0.54	1.26	0.75	1.24	0.97	1.73	0.54	3.22	1.47	1.16	0.82	0.48	0.71	1.36	0.72		
Female	1.47	0.59	1.46	0.61	1.42	0.61	1.35	0.52	1.22	0.58	1.46	0.66	1.64	0.50	1.12	0.56	1.29	0.54	1.38	0.72	1.51	0.86	1.68	0.55	2.84	1.58	1.39	0.74	0.46	0.69	1.58	0.65		
<b>Age</b>																																		
18-29 yrs	1.22	0.63	1.20	0.65	1.19	0.64	1.13	0.58	1.05	0.63	1.34	0.72	1.53	0.55	1.24	0.56	1.34	0.56	1.49	0.72	1.51	0.86	1.67	0.55	3.46	1.33	1.47	0.70	0.66	0.79	1.65	0.60		
30-39 yrs	1.40	0.57	1.33	0.63	1.27	0.62	1.23	0.49	1.16	0.56	1.46	0.62	1.61	0.49	1.24	0.55	1.28	0.53	1.23	0.73	1.40	0.92	1.70	0.58	3.25	1.36	1.34	0.77	0.51	0.70	1.56	0.62		
40-49 yrs	1.41	0.59	1.29	0.68	1.24	0.68	1.26	0.50	1.20	0.59	1.48	0.65	1.62	0.54	1.07	0.56	1.14	0.52	1.26	0.69	1.31	0.95	1.76	0.49	3.07	1.45	1.13	0.80	0.34	0.60	1.43	0.70		
50-59 yrs	1.44	0.58	1.31	0.70	1.24	0.69	1.29	0.53	1.15	0.59	1.50	0.62	1.65	0.49	1.09	0.57	1.17	0.54	1.20	0.76	1.30	0.96	1.71	0.53	2.68	1.64	1.10	0.85	0.34	0.62	1.29	0.77		
60-64 yrs	1.42	0.59	1.36	0.74	1.30	0.64	1.32	0.49	1.17	0.54	1.62	0.58	1.61	0.51	1.10	0.60	1.26	0.53	1.41	0.73	1.23	0.97	1.64	0.60	1.81	1.68	1.18	0.81	0.33	0.62	1.17	0.73		
<b>Area of residence</b>																																		
A capital city or its surrounding suburbs	1.36	0.60	1.26	0.67	1.22	0.65	1.22	0.52	1.14	0.59	1.45	0.65	1.61	0.51	1.23	0.55	1.26	0.53	1.35	0.73	1.43	0.90	1.74	0.52	3.20	1.44	1.32	0.77	0.51	0.72	1.52	0.67		
Outside of a capital city	1.35	0.61	1.34	0.67	1.27	0.68	1.23	0.55	1.13	0.60	1.46	0.67	1.57	0.53	1.04	0.59	1.20	0.57	1.26	0.75	1.26	0.97	1.63	0.59	2.67	1.67	1.18	0.82	0.38	0.65	1.37	0.73		
<b>Education</b>																																		
High school or less	1.34	0.66	1.28	0.71	1.26	0.68	1.22	0.57	1.13	0.62	1.42	0.69	1.58	0.54	1.10	0.57	1.22	0.55	1.30	0.76	1.35	0.94	1.71	0.55	2.71	1.70	1.18	0.82	0.35	0.65	1.40	0.74		
TAFE / Community College	1.38	0.57	1.29	0.66	1.24	0.67	1.25	0.50	1.13	0.58	1.45	0.66	1.56	0.52	1.09	0.56	1.23	0.54	1.30	0.72	1.30	0.95	1.67	0.56	2.87	1.59	1.19	0.79	0.37	0.64	1.43	0.71		
University	1.35	0.57	1.28	0.65	1.20	0.62	1.21	0.52	1.15	0.57	1.49	0.62	1.64	0.50	1.28	0.56	1.28	0.54	1.35	0.73	1.46	0.89	1.72	0.53	3.44	1.22	1.43	0.74	0.65	0.75	1.56	0.63		
<b>Income</b>																																		
\$30,000 or less	1.43	0.65	1.45	0.72	1.37	0.69	1.39	0.57	1.26	0.68	1.59	0.65	1.47	0.57	0.95	0.60	1.19	0.59	1.22	0.82	1.32	0.95	1.46	0.68	2.14	1.77	1.25	0.78	0.42	0.67	1.38	0.75		
\$30,001-\$60,000	1.41	0.59	1.35	0.68	1.29	0.68	1.29	0.55	1.13	0.61	1.48	0.64	1.59	0.51	1.07	0.54	1.18	0.55	1.27	0.75	1.29	0.96	1.63	0.58	2.66	1.64	1.20	0.80	0.41	0.67	1.35	0.74		
\$60,001-\$90,000	1.32	0.58	1.24	0.66	1.25	0.65	1.21	0.51	1.11	0.58	1.46	0.64	1.60	0.51	1.17	0.54	1.25	0.53	1.35	0.70	1.41	0.91	1.74	0.51	3.15	1.44	1.29	0.79	0.47	0.72	1.47	0.69		
\$90,001-\$120,000	1.29	0.58	1.19	0.65	1.15	0.60	1.15	0.50	1.14	0.56	1.41	0.67	1.62	0.50	1.25	0.53	1.28	0.50	1.35	0.71	1.39	0.92	1.83	0.43	3.49	1.22	1.25	0.81	0.53	0.71	1.55	0.64		
\$120,001-\$150,000	1.33	0.58	1.24	0.60	1.19	0.64	1.15	0.43	1.06	0.51	1.32	0.69	1.65	0.50	1.28	0.59	1.28	0.53	1.38	0.68	1.47	0.89	1.81	0.42	3.52	1.08	1.33	0.77	0.47	0.68	1.56	0.65		
\$150,001+	1.33	0.63	1.19	0.65	1.07	0.61	1.08	0.52	1.07	0.54	1.40	0.66	1.69	0.50	1.38	0.54	1.34	0.54	1.40	0.72	1.45	0.90	1.83	0.44	3.60	1.17	1.41	0.77	0.56	0.76	1.64	0.58		
<b>Co-residency status</b>																																		
Live with other people	1.27	0.59	1.18	0.66	1.14	0.63	1.13	0.49	1.07	0.55	1.38	0.67	1.60	0.52	1.18	0.56	1.25	0.54	1.36	0.69	1.39	0.92	1.71	0.54	3.05	1.52	1.28	0.79	0.47	0.70	1.48	0.69		
Live alone	1.93	0.31	1.92	0.31	1.87	0.43	1.83	0.32	1.57	0.66	1.92	0.32	1.57	0.53	1.07	0.62	1.23	0.59	1.07	0.94	1.32	0.95	1.67	0.61	2.87	1.64	1.22	0.80	0.47	0.73	1.41	0.75		



**SUMMER**  
FOUNDATION



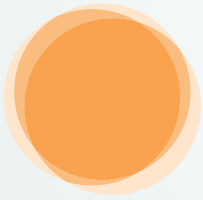
The vision of the Summer Foundation is that young people with disability and complex care needs will have inherent value as members of our society, with access to services and housing that supports their health and wellbeing.

The Summer Foundation utilises a range of strategies to influence health, housing and disability services policy and practice, to improve the lives of young people with disability living in aged care nursing homes.

To find out more, visit:  
[www.summerfoundation.org.au](http://www.summerfoundation.org.au)



SUMMER  
FOUNDATION



Summer Foundation Ltd  
PO Box 208 Blackburn Victoria 3130 Australia  
Telephone +61 3 9894 7006 Facsimile +61 3 8456 6325  
[www.summerfoundation.org.au](http://www.summerfoundation.org.au)